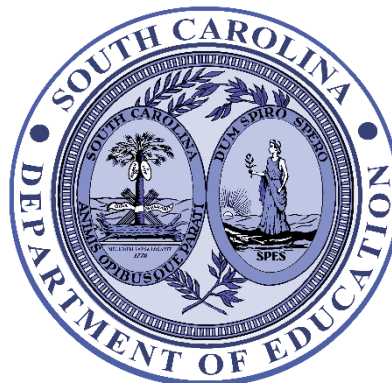


# 2021-2022 ACCOUNTABILITY MANUAL

for the Annual School and District Report Card System  
for South Carolina Public Schools  
and School Districts, to be published in Fall 2022



Published January 31, 2022; **Corrections March 15, 2022;** **Additional corrections September 16, 2022,** and **October 10, 2022**

# Table of Contents

Table of Contents.....	2
Section I: INTRODUCTION.....	7
System Purposes .....	7
Components of the System .....	10
Changes from the 2020-2021 Accountability Manual.....	12
Corrections from the January 31 Publication .....	13
Section II: SCHOOL REPORT CARDS .....	14
Identification of School/Program Units for Report Cards.....	15
Schools Outside of the Typical Patterns .....	15
Primary Schools .....	16
Points for School Performance Ratings .....	17
Section III: INDICATORS .....	19
INDICATOR: Academic Achievement.....	20
School Level: Elementary & Middle.....	20
Total Rating Points Available for the Indicator: .....	20
What Students are Included in the Indicator: .....	21
How Rating Points are Earned for the Indicator: .....	22
School Level: High .....	24
Total Rating Points Available for the Indicator: .....	25
What Students are Included in the Indicator: .....	25
How Rating Points are Earned for the Indicator: .....	26
INDICATOR: Preparing for Success .....	28
School Level: Elementary & Middle.....	28
Total Rating Points Available for the Indicator: .....	28
What Students are Included in the Indicator: .....	29
How Rating Points are Earned for the Indicator: .....	30
School Level: High .....	32
Total Rating Points Available for the Indicator: .....	33
What Students are Included in the Indicator: .....	33
How Rating Points are Earned for the Indicator: .....	34
INDICATOR: English Learners' Progress .....	36
School Level: Elementary, Middle, & High.....	36

Total Rating Points Available for the Indicator: .....	36
What Students are Included in the Indicator: .....	36
How Rating Points are Earned for the Indicator: .....	37
INDICATOR: Student Progress .....	41
School Level: Elementary & Middle .....	41
Total Rating Points Available for the Indicator: .....	41
What Students are Included in the Indicator: .....	41
How Rating Points are Earned for the Indicator: .....	42
INDICATOR: Graduation Rate .....	43
School Level: High .....	43
Total Rating Points Available for the Indicator: .....	43
What Students are Included in the Indicator: .....	43
How Rating Points are Earned for the Indicator: .....	44
INDICATOR: College & Career Readiness .....	46
School Level: High .....	46
Total Rating Points Available for the Indicator: .....	46
What Students are Included in the Indicator: .....	46
How Can a Student be Identified as College Ready? .....	46
How Can a Student be Identified as Career Ready? .....	47
How Rating Points are Earned for the Indicator: .....	47
INDICATOR: School Climate .....	49
School Level: Elementary, Middle, & High .....	49
Total Rating Points Available for the Indicator: .....	50
What Teachers are Included in the Indicator: .....	50
What Students are Included in the Indicator: .....	50
How Rating Points are Earned for the Indicator: .....	50
Section IV: NON-INDICATOR INFORMATION .....	58
General Information .....	58
Intervention Identification .....	58
Section V: DISTRICT AND STATE REPORT CARDS .....	60
Section VI: PALMETTO GOLD AND SILVER .....	63
School Level: Elementary & Middle .....	64
School Level: High .....	64

Section VII: ADDITIONAL INFORMATION.....	65
Ratings Impact .....	65
Serious Data Problems.....	65
Who to Contact with Questions .....	65
APPENDIX: Definitions for Data Published on Report Cards .....	67
ACADEMICS .....	67
Academic Achievement .....	67
Performance in ELA and Mathematics .....	67
Prime Instructional Time .....	67
Preparing for Success .....	69
Performance in Science .....	69
Performance on US History and the Constitution.....	69
Kindergarten Readiness Rate.....	70
1st Grade Students on-track for 2nd Grade Success.....	71
2nd Grade Students on-track for 3 <sup>rd</sup> Grade Success .....	71
Percentage of Students Passing Civics Test .....	71
English Learners' Progress.....	73
English Learners' Progress Measure .....	73
Student Progress.....	74
Index of Student Progress .....	74
Graduation Rate .....	75
Graduation Rate, On-time .....	75
Dropout Rate .....	75
Dropout Recovery Rate .....	76
College & Career Readiness .....	78
Number and Percentage of College-Ready Students .....	78
Number and Percentage of Career-Ready Students.....	78
Advanced Placement (AP) / International Baccalaureate (IB) / Cambridge International (CI) Participation Rate .....	79
Advanced Placement (AP) / International Baccalaureate (IB) / Cambridge International (CI) Success Rate .....	79
Career Clusters Available to High School Students .....	80
College Applications Completed .....	81
College Enrollment .....	81

Dual Enrollment / Dual Credit, Number of Courses .....	82
Dual Enrollment / Dual Credit, Number and Percentage of Students .....	82
Enrollment in Career and Technology Courses at All High Schools .....	83
FAFSA Completion .....	83
LIFE Scholarship .....	84
Palmetto Fellows Scholarship .....	84
ACT Composite Score .....	85
SAT Composite Score .....	85
Percentage of Students Scoring Silver or Higher on Career-Ready Credential .....	85
Number and Percentage of Students Earning ASVAB Benchmark .....	86
Number and Percentage of Students Completing Work-Based Learning Experiences (State-approved) .....	86
Nation's Report Card .....	88
National Assessment of Educational Progress (NAEP) Performance .....	88
State Goals .....	89
State Goals .....	89
School Improvement .....	90
Intervention Identification .....	90
SCHOOL ENVIRONMENT .....	91
School Climate .....	91
School Climate Measure .....	91
Chronic Absenteeism Rate .....	91
Gifted and Talented, Percentage of Students Served .....	92
Seventh and Eighth Grade Students Enrolled in High School Credit Courses .....	92
Student Retention .....	93
Percentage of Classrooms with Wireless Access .....	93
Percentage of 8 <sup>th</sup> Graders with an Individual Graduation Plan (IGP) .....	94
Percentage of Students Using 1:1 Computing (One Computer for Every Student) .....	94
Principal's or Superintendent's Years at School or District .....	95
Classroom Environment .....	96
Advanced Degrees, Percentage of Teachers with .....	96
Continuing Contract Status, Teachers with .....	96
Inexperienced and Out-of-Field Teachers .....	97

Teachers Returning from the Previous School Year .....	98
Teacher Vacancies Unfilled for More Than Nine Weeks.....	98
Student Safety.....	100
Discipline Information .....	100
Results of Teacher and Parent Survey Items Dealing with School Safety.....	101
Financial Information .....	102
Average Teacher Salary .....	102
Classroom Instruction, Percent Expended on.....	102
Dollars Spent Per Pupil .....	103
Percentage of Expenditures Spent on Teacher Salaries.....	103
Salaries, Administrative .....	104
Poverty Index .....	104
GENERAL INFORMATION .....	106
Non-Indicator Information .....	106
Total Number of Enrolled Students.....	106
Total Number of Teachers in School .....	106
School / District Websites and Social Media Channels .....	107
School / District Narrative .....	107
Subgroup Coding for Accountability.....	109
Migratory .....	109
Homeless .....	110
Military Connected.....	110
Foster .....	111
Students with a Disability (SWD) .....	111
English Learners .....	112
Longitudinal Accountability .....	113

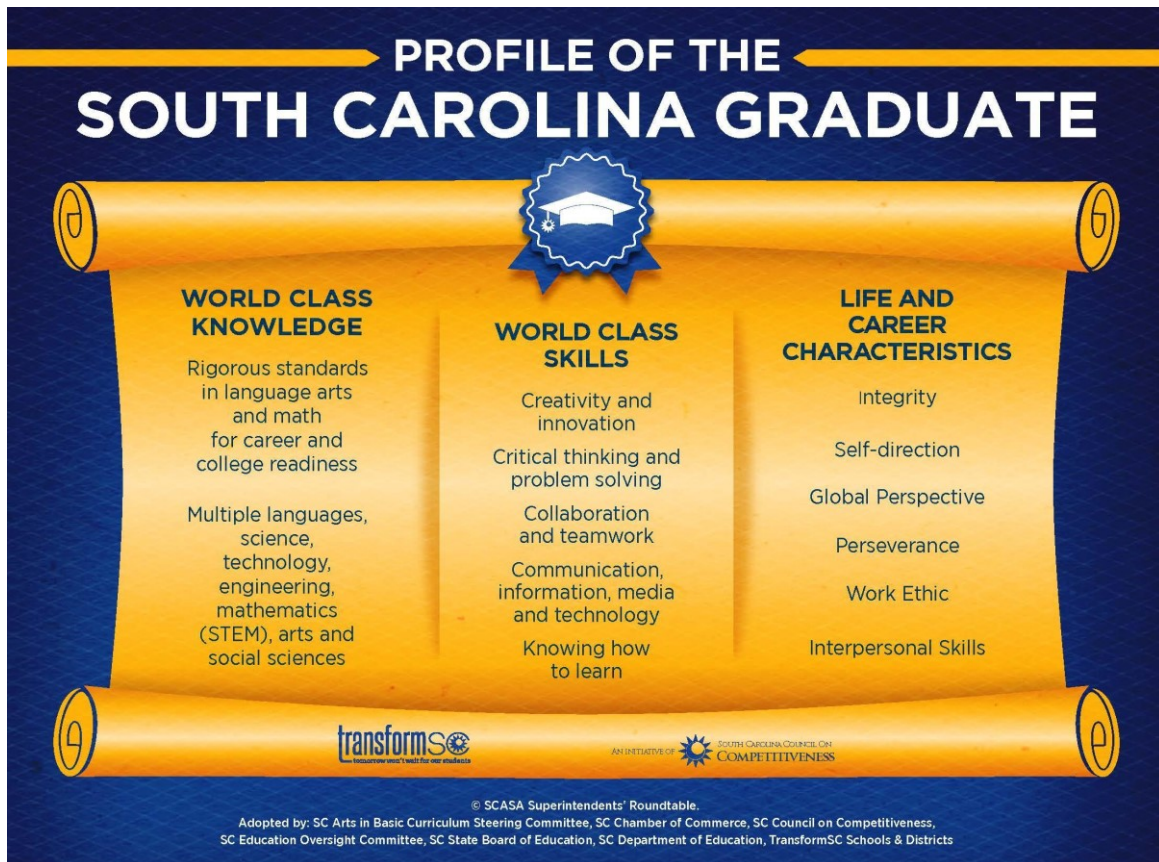
# Section I: INTRODUCTION

## System Purposes

The [Education Accountability Act of 1998, as last amended by Act 94 of 2017](#), provides the foundation and requirements for the South Carolina accountability system for public schools and school districts. The enabling legislation includes the following preamble and purposes:

§ 59-18-100. The General Assembly finds that South Carolinians have a commitment to public education and a conviction that high expectations for all students are vital components for improving academic achievement. It is the purpose of the General Assembly in this chapter to establish a performance-based accountability system for public education which focuses on improving teaching and learning so that students are equipped with a strong academic foundation. Moreover, to meet the Profile of the South Carolina Graduate, all students graduating from public high schools in this State should have the knowledge, skills, and opportunity to be college ready, career ready, and life ready for success in the global, digital, and knowledge-based world of the twenty-first century as provided in Section 59-1-50. All graduates should have the opportunity to qualify for and be prepared to succeed in entry-level, credit-bearing college courses, without the need for remedial coursework, postsecondary job training, or significant on-the-job training. Accountability, as defined by this chapter, means acceptance of the responsibility for improving student performance and taking actions to improve classroom practice and school performance by the Governor, the General Assembly, the State Department of Education, colleges and universities, local school boards, administrators, teachers, parents, students, and the community.

The expressed goal of the accountability system is to improve teaching and learning so that all students are equipped with a strong academic foundation and to ensure that all students graduate with the world-class knowledge, skills and characteristics as defined by the *Profile of the South Carolina Graduate*. The accountability system is designed to promote high levels of student achievement through strong and effective schools.



State law defines the purpose and elements of the annual report card:

- The report card is “a performance indicator system that is logical, reasonable, fair, challenging, and technically defensible, which furnishes clear and specific information about school and district academic performance and other performance to parents and the public” (Section 59-18-110(2))
- The report card must be:
  - a comprehensive, web based, annual report card to report on the performance for the State and for individual primary, elementary, middle, high schools, career centers, and school districts of the State. The comprehensive report card must be in a reader friendly format, using graphics whenever possible, published on the state, district, and school websites, and, upon request, printed by the school districts. The school’s rating must be emphasized and an explanation of its meaning and significance for the school also must be reported. The annual report card must serve at least six purposes:
  - (1) inform parents and the public about the school’s performance including, but not limited to, that on the home page of the report there must be each school’s overall performance rating in a font size larger than twenty six and the total number of points the school achieved on a zero to one hundred scale;
  - (2) assist in addressing the strengths and weaknesses within a particular school;



- (3) recognize schools with high performance;
  - (4) evaluate and focus resources on schools with low performance;
  - (5) meet federal report card requirements; and
  - (6) document the preparedness of high school graduates for college and career. (S.C. Code § 59-18-900(A))
- The report card must include:
    - a comprehensive set of performance indicators with information on comparisons, trends, needs, and performance over time which is helpful to parents and the public in evaluating the school. In addition, the comprehensive report card must include indicators that meet federal law requirements. Special efforts are to be made to ensure that the information contained in the report card is provided in an easily understood manner and a reader friendly format. This information should also provide a context for the performance of the school. Where appropriate, the data should yield disaggregated results to schools and districts in planning for improvement. The report card should include information in such areas as programs and curriculum, school leadership, community and parent support, faculty qualifications, evaluations of the school by parents, teachers, and students. In addition, the report card must contain other criteria including, but not limited to, information on promotion and retention ratios, disciplinary climate, dropout ratios, dropout reduction data, dropout retention data, access to technology, student and teacher ratios, and attendance data. (S.C. Code § 59-18-900(D))

The accountability system must also meet the federal requirements of the Elementary and Secondary Education Act of 1965 (ESEA), as reauthorized by the Every Student Succeeds Act (ESSA) of 2015 and South Carolina's ESSA Consolidated State plan which was approved as amended on January 15, 2021. A link to South Carolina's approved ESSA Plan is available online at <https://www.ed.sc.gov/policy/federal-education-programs/every-student-succeeds-act-essa/>. A summary of the federal requirements in ESSA and how South Carolina chose to meet the requirements are below.

- The ESSA was enacted December 10, 2015. This reauthorization of the ESEA allows states greater flexibility in designing the school accountability system mandated under federal law. South Carolina used this opportunity to combine existing state and federal accountability requirements into one cohesive system.
- Section 1111 of the ESSA outlines the federal accountability requirements that South Carolina's accountability system and Report Card are designed to address.

**The federal accountability system must contain the following elements by school level:**

#### **Elementary and Middle Schools**

- **Academic Achievement:** Based on federally-required English and Mathematics assessments. The SC READY assessments meet the federal mandate for testing students in English Language Arts (ELA) and Math.

- **Student Growth or another Academic indicator:** Because of state law, a value-added system must be used to describe growth.
- **Progress in achieving English Proficiency:** South Carolina has designed a set of interim targets to acknowledge students who are on-track to become proficient in English within a five-year period.
- **At least one indicator of school quality or student success (SQSS):** South Carolina uses two SQSS metrics for elementary and middle schools. Science proficiency is used as a student success metric and teacher and student perceptions of school climate are used as a school quality metric.

### High Schools

- **Academic Achievement and Student Growth:** South Carolina chose not to include student growth for high school students. Academic Achievement must be based on the federally required English and mathematics high school assessments. The end-of-course tests administered in Algebra 1 and English 1 meet the federal mandate for testing students in ELA and Math.
- **The four-year adjusted graduation rate** and at the state's discretion, an extended year graduation rate. South Carolina will not use an extended graduation rate for a rating.
- **Progress in achieving English Proficiency:** South Carolina has designed a set of interim targets to acknowledge students who make progress toward becoming proficient in English within a five-year timeframe.
- **At least one indicator of school quality or student success (SQSS):** South Carolina uses three SQSS metrics for high schools. Rates of proficiency on science and social studies end-of-course assessments, rates of college and career readiness, and teacher and student perceptions of school climate are used as SQSS metrics.

## **Components of the System**

**Academic Achievement:** The level of a school's academic performance in the areas of English Language Arts (ELA) and mathematics based on the SC READY assessment results in grades three through eight, South Carolina Alternate Assessment (SC ALT) results for students with significant cognitive disabilities in grades three through eight and high school, and end-of-course assessment results in Algebra 1 and English 1 for the high school End-of-Course Examination Program (EOCEP). This indicator applies to all elementary, middle, and high schools.

**Preparing for Success:** This indicator captures the level of a school's academic performance in Science. The assessments that factor into the indicator are: SCPASS Science in grades 4 and 6; end-of-course assessments in Biology 1; and South Carolina Alternate Assessments in Science or Social Sciences for students with significant cognitive disabilities. This indicator applies to elementary, middle, and high schools.

**English Learners' Progress:** This indicator measures how well students who are not initially proficient in English are learning the English language. The ESSA requires states to measure the progress of English learners (EL) towards proficiency in English. This indicator applies to elementary, middle, and high schools.

**Student Progress:** State law requires a value-added measure per S.C. Code § 59-18-1960. The academic progress of all students in ELA and mathematics is compared to other students in South Carolina who initially scored at similar levels, and the academic progress of the lowest performing twenty percent of students in a school is compared to students statewide who initially scored at similar levels. Measures of progress from these two groups of students are combined to create an index of student progress for the school. This indicator applies to elementary and middle schools. Although district- and state-level comparison metrics are calculated for use on school report cards, this indicator does not appear on district- or state-level report cards.

**Graduation Rate:** This indicator measures the four-year adjusted cohort graduation rate, which is the percentage of students who enter 9<sup>th</sup> grade, adjusted for students who transfer in or out of the cohort after 9<sup>th</sup> grade, and who graduate within four full years. This indicator applies only to high schools.

**College & Career Readiness:** Using various measures, this indicator measures the proportion of students in a high school's graduation cohort who are college or career ready.

**School Climate:** This indicator captures teachers' and students' perceptions of the school's climate and quality as reported on the South Carolina School Climate survey, which has been given teachers, students, and families in the state for more than 20 years. This indicator applies to elementary, middle, and high schools.

**Additionally, data will be reported at the school, district, and state levels in the following areas, which will NOT receive a Rating. The specific data reporting elements are noted in later sections, are defined in the Appendix, and include ESSA reporting requirements.**

**Nation's Report Card (NAEP):** The National Assessment of Educational Progress (NAEP) is designed to measure what students across the nation know and can do in ten subject areas, including mathematics, reading, science, writing, the arts, civics, economics, geography, and U.S. history. The main NAEP tests selected samples of the student population in grades 4, 8 and 12. Long-term trend assessments are given to samples of students ages 9, 13, and 17.

**State Goals:** Federal law requires that each report card include the state's long-term goals and measurements of interim progress for all students and defined subgroups of students. This section reports the long-term goals and performance of all students, and information on subgroup performance shall be made available in the "Download Data" section of the main report card page, currently located at [www.screportcards.com](http://www.screportcards.com).

**School Improvement:** District and state report cards shall include a list of schools identified for Comprehensive Support and Improvement (CSI) as well as those identified for Additional Targeted Support and Improvement (ATSI). CSI schools are defined as Title I schools performing at or below the 5th percentile of all Title I schools in the state and any high school with a graduation rate below 70%. ATSI schools are defined as any school with one or more subgroup of students performing at or below the 5th percentile of the highest performing Comprehensive Support and Improvement (CSI) school in the state.

**Classroom Environment:** Data will be reported that include, but are not limited to, number of teachers in school, average teacher salary, percentage of teachers with advanced degrees, principal's years in a school, and percent of classrooms with wireless access.

**Student Safety:** Data will be reported based on the data submitted by the district for the current school year in the Incident Management System. Data submitted for the U.S. Department of Education will be provided as a separate data file.

**Financial Data:** Data will be reported that include, but are not limited to, per pupil expenditures, percentage of expenditures for instruction, and percentage of total expenditures for teacher salaries.

## **Changes from the 2020-2021 Accountability Manual**

**Rating Points and Ratings:** As a result of the COVID-19 Pandemic and the resulting disruptions in teaching and learning, Rating Points and Ratings were not calculated for the 2019-20 and 2020-21 Report Cards. Rating Points and Ratings have been restored to Report Cards for 2021-22.

**US History and the Constitution EOCEP Excluded:** Due to delays caused by the transition to a new version of the exam necessitated by the approval and adoption of the 2019 South Carolina Social Studies College- and Career-Ready Standards, EOCEP scores in US History and the Constitution, and the corresponding SC ALT assessment in Social Studies, have been excluded from the Preparing for Success indicator for High Schools for the 2021-22 school year, though these scores will still be reported.

**Mean Index of Student Progress (ISP) for District and State:** For the Student Progress indicator, comparison metrics representing the mean ISP for schools in the District and State have been added to School Report Cards.

**South Carolina High School Employability Credential:** The South Carolina High School Employability Credential has been added as a method by which certain students who receive special education services and who do not receive a regular diploma may be identified as Career Ready for the purpose of the College & Career Readiness Indicator.

**School Climate:** Administration of the Student Engagement Survey stopped during COVID-19 and the contract with the survey vendor was discontinued on May 29, 2020. At its meeting on December 13, 2021, the EOC decided to use factor scores based on select items from the South Carolina School Climate Survey, which has been given to teachers, students, and families in the state for more than twenty years, for the Rating Points previously allocated to the Student Engagement Survey.

**ESSA Citations:** Citations have been added, where appropriate, for the specific relevant subsection or paragraph of ESSA legislation related to the accountability indicator in question.

**Rating Point Equations:** Equations have been added to support the text descriptions of how to calculate Rating Points and determine Ratings for most indicators.

## Corrections from the January 31 Publication

Including this section, all text in this manual that has been changed from the January 31 publication of this manual has been highlighted in yellow. The subsections below describe the nature of the changes made. The next change listed was made by the EOC at its Fall retreat and has been highlighted in blue, and the final change was made in response to analyses of available data from the 2021-21 School Year and is highlighted in green.

**EL Population Coding Corrected:** The introductory text under the [Section III: INDICATORS](#) heading incorrectly contained language from a previous edition of the Accountability Manual. It has now been corrected from “(coded in PowerSchool as as P1, P2, P3, or P4)” to “(coded in PowerSchool as M1, M2, M3, or M4; previously coded as P1, P2, P3, or P4)”. The language throughout the [INDICATOR: English Learners’ Progress](#) section was correct in the January publication of this manual.

**Added Language to Tables 3, 5, 7, and 9:** The phrase “unless the student in question is excluded for an authorized and properly documented purpose described in the most recently released Students Not Tested Guidelines (found in the [School District Memoranda Archive](#))” has been added to the notes under Table 3 and Table 5 in the [INDICATOR: Academic Achievement](#) section and Table 7 and Table 9 in the [INDICATOR: Preparing for Success](#) section. The text and calculation instructions given in the January publication correctly gave these details and remain unchanged.

**English 2 replaced by English 1:** A typographical error led this manual to erroneously list the English 2 EOCEP test as the ELA assessment used for the Academic Achievement Indicator for High Schools. Accountability for FY 2021-22 will be based on the English 1 EOCEP test. English 2 EOCEP scores shall appear on School Report Cards beginning with FY 2022-23.

**Labels for Calculation Steps Corrected:** Several typographical errors were corrected in the “How Rating Points are Earned for the Indicator” sections of some indicators. In the January publication of this manual, there were some typographical errors in calculations that use the results of previous steps in the current calculation. These errors were corrected so that they refer to the correct previous step.

**Calculations Corrected for School Climate Indicator:** An early version of the School Climate indicator used factor weighting coefficients for each individual survey item. Removing these factor weightings from the final version changed the highest and lowest observed score for each factor used in the indicator. This version of the Accountability Manual has corrected the instructions with which to calculate Rating Points for the School Climate indicator. This correction also required recalibrating the Rating Point cut scores for Ratings shown in Table 18.

**Calculation of District Climate and State Climate Scores:** The previous release of this manual had comparison metrics for the district (and state) calculated as the mean of the same metric that was reported for all schools within the district (or state). This approach could potentially leave the perceptions of teachers with no designated home school unreported. District and state climate

indicators are now calculated in the same way as school indicators including all students and teachers in the district (or state).

**Eighty Percent Participation Requirement for School Climate Waived for 2021-22:** This is the first year that the SC School Climate Surveys are being used in accountability. In addition, transitioning to the use of this new instrument and metric required the implementation of new tools and processes in schools and districts across the state. Examination of statewide response rates suggest that a sizeable majority of schools and districts around the state have exceeded the minimum 80% required participation rates for both students and teachers. To provide flexibility for the schools and districts who encountered unexpected challenges with new technology or systems, the EOC has decided to waive the 80% participation rate requirement for the 2021-22 school year. School Climate scores and ratings will not be adjusted on 2022 Report Cards for low participation. Participation rate requirements will be restored for subsequent school years.

**Revised School Climate Rating Point Conversions to Ratings by School Type:** Prior to being used in accountability the SC School Climate Surveys were only administered to students in the highest grade level served by each school. Thus, the cut scores for ratings which appeared in the first published version of this manual were based on analyses of a different sample of respondents than the data being used for purposes of accountability. The cut scores for school ratings have been re-normed on the broader sample of respondents including all students in grades 3 through 12 statewide.

## **Section II: SCHOOL REPORT CARDS**

### **Identification of School/Program Units for Report Cards**

Report Cards shall be issued for each school and district, to include the following:

- Each K-12 school assigned a School Identification Number (SIDN) by the South Carolina Department of Education (SCDE) that has been operational for at least one academic year will receive a School Report Card.
- Each special school operating under the auspices of the State of South Carolina, including those operated by the Department of Juvenile Justice, the Governor's School for the Arts and Humanities, the Governor's School for Science and Mathematics, the Palmetto Unified School District, and the S.C. School for the Deaf and the Blind will receive Report Cards based on the student populations they serve.
- A typical elementary school is defined as containing prekindergarten and/or kindergarten through grade five; a typical middle school, as grades six through eight; and a typical high school, as grades nine through twelve. Any school that includes one grade on either side of the typical pattern will be viewed as part of that organizational pattern. For example, if a school includes prekindergarten and/or kindergarten through grade six, it will be considered elementary. If a school includes grades five through nine, it will be considered a middle school. If a school includes two or more grades on either side of the typical pattern (e.g., grades four through eight), multiple Report Cards will be produced (one for each of the typical school types for which the school serves at least two grades). Due to the differences in data included in Ratings for high schools, any school that contains grade ten and crosses organizational patterns will require at least two Report Cards.

### **Schools Outside of the Typical Patterns**

- Schools containing only 5th grade will receive an elementary Report Card. Schools containing only 6th grade will receive a middle school Report Card. Ninth grade academies will not receive separate Report Cards; rather, the students they serve will be merged with the appropriate high school. Schools with a grade span of 5-6 will receive an elementary Report Card.
- Building high schools (i.e., high schools without a 12th grade) won't receive an overall Rating or indicator ratings.
- Schools with fewer than 20 students tested will not receive an overall Rating. (Each indicator has rules related to group or *N*-size.)
- Multiple Report Cards for a school crossing two or more organizational levels (elementary, middle, or high) will be issued only if there are 20 or more students in each organizational level to meet the criteria for reporting disaggregated data. When multiple Report Cards are issued for a school, data elements that are specific to the different grade levels may be different. All other data elements will be identical. In a school with grades seven through twelve, for example, the Report Card for grades seven and eight will include a measure of student progress, while the Report Card for grades nine through twelve will include a measure of the graduation rate. Other data, such as attendance rates, will be identical on the two Report

Cards. Each Report Card will contain unique measures for each indicator to the extent that the methods that are adopted for those Ratings depend on data that are routinely collected by grade level. If data that are not routinely collected by grade level are used to construct or to interpret the Ratings, then identical information for these data will appear on all Report Cards issued for the school.

## Primary Schools

For the 2021-22 school year, the Report Cards for primary schools will contain the following information. The categories for reported information are the same as the indicators reported on for elementary schools.

Category	Data Reported
<b>Academic Achievement</b>	<ul style="list-style-type: none"> <li>• Prime instructional time</li> <li>• 3rd grade SC READY Scores in ELA and mathematics if the school has a 3rd grade</li> </ul>
<b>Preparing for Success</b>	<ul style="list-style-type: none"> <li>• Results of Kindergarten Readiness Assessment (KRA) results by state, school district, and school with domain scale score means and standard deviations reported.</li> <li>• Percentage of Students on track for 3<sup>rd</sup> grade success (where available): <ul style="list-style-type: none"> <li>○ Number and percentage of 2<sup>nd</sup> grade students who are on track to be reading on a 3rd grade level;</li> <li>○ Number and percentage of 2<sup>nd</sup> grade students who are on track to be meeting state standards in mathematics at the end of 3<sup>rd</sup> grade; and</li> <li>○ Number and percentage of 1<sup>st</sup> grade students who are on track to be reading on a 2<sup>nd</sup> grade level and who are on track to be meeting state standards in mathematics by 2<sup>nd</sup> grade</li> </ul> </li> </ul>
<b>English Learners' Proficiency Progress</b>	<p>Percentage of English Learners who achieved proficiency targets</p> <ul style="list-style-type: none"> <li>• Number students who met proficiency targets;</li> <li>• Number of students who were assessed; and</li> <li>• Number of students receiving ELP services</li> </ul>
<b>School Climate</b>	<ul style="list-style-type: none"> <li>• Chronic absenteeism rate for students</li> <li>• Percentage of students with 1:1 capabilities</li> </ul>
<b>Classroom Environment</b>	<p><u>Teacher or Classroom Data:</u></p> <ul style="list-style-type: none"> <li>• Total number of teachers</li> <li>• Percentage of teachers certified</li> <li>• Percentage of teachers with advanced degrees (above bachelor's degree)</li> <li>• Average teacher salary</li> <li>• Continuing contract status – Percentage of teachers in school with continuing contract status</li> <li>• Number and percentage of Inexperienced teachers</li> <li>• Number and percentage of Out-of-Field teachers</li> <li>• Percentage of classroom teacher returning to the school/district from the previous school year reported for a</li> </ul>



Category	Data Reported
	<p>three-year period and for a one-year period</p> <ul style="list-style-type: none"> <li>• Teacher vacancies unfilled for more than 9 weeks – percentage of teaching positions that remain unfilled for more than 9 weeks</li> <li>• Number and percentage of teachers who have received Read to Succeed certification</li> <li>• Percentage of classrooms with wireless access defined to ensure all students in the classroom can access wireless</li> <li>• Length of time the principal has been at the school as school leader</li> </ul>
<b>Student Safety</b>	<ul style="list-style-type: none"> <li>• Percentage of student population involved in incidents by type below. The data will be the 2020-21 Incident Management data. Other data reported out with the delay based on a directive from the U.S. Department of Education will be available as a downloadable file</li> </ul> <p>Data must be disaggregated by:</p> <ol style="list-style-type: none"> <li>1. In-School suspensions</li> <li>2. Out-of-school suspensions</li> <li>3. Expulsions</li> <li>4. School-related arrests</li> <li>5. Referrals to law enforcement</li> <li>6. Incidents of bullying and harassment</li> <li>7. Incidents of violence, which include             <ol style="list-style-type: none"> <li>a. Incidents involving a firearm</li> <li>b. Homicides</li> <li>c. Rape or attempted rape</li> <li>d. Sexual assaults (not rape)</li> <li>e. Robbery without a weapon</li> <li>f. Physical attack with a firearm or explosive</li> <li>g. Physical attack without a weapon</li> <li>h. Threats of physical attack with a firearm or explosive</li> <li>i. Threats of physical attack without a weapon</li> <li>j. Incidents of possession of a firearm or explosive</li> </ol> </li> </ol>

## Points for School Performance Ratings

Pursuant to Section 59-18-120, each school will receive an overall Rating based on a 100-point scale. The 100 Rating Points are earned across various indicators. The indicators for elementary and middle schools are: Academic Achievement, Preparing for Success, Student Progress, School Quality, and English Learners' Proficiency. The indicators for high schools are: Academic Achievement, Preparing for Success, Graduation Rate, School Quality, College & Career Readiness, and English Learners' Proficiency. To receive a Rating for each indicator, a school must have data for that indicator from 20 or more students. Schools are most likely to have fewer than 20 students eligible to receive points for English Learners' Proficiency. Therefore, Table 1

documents the Rating Points that may be earned for each indicator for schools with and without a population of at least 20 English Learners (ELs).

**Table 1**

*Available Rating Points for Schools by School Type with and without 20 or More English Learners (ELs)*

Indicator	<u>Elementary / Middle Schools</u>		<u>High Schools</u>	
	With ELs	Without ELs	With ELs	Without ELs
Academic Achievement	35	40	25	30
Student Progress (all students & lowest 20%)	35	40	—	—
Preparing for Success	10	10	5	5
School Climate	10	10	10	10
English Learners' Progress	10	—	10	—
Graduation Rate	—	—	25	30
College & Career Readiness	—	—	25	25
<b>Total:</b>	<b>100</b>	<b>100</b>	<b>100</b>	<b>100</b>

*Note:* — = Not applicable.

For each Rating, a range of Total Rating Points was established based on historically-observed results obtained from the 2015-16 and 2016-17 academic years. Similarly, a range of total Rating Points for each Rating was established based on historically-observed data analyzed at the time that the indicator was established. Table 2 documents the range of Total Rating Points for each Rating. The ranges of Rating Points that define each Rating, both for the Overall Rating and for Indicator Ratings, will remain constant from year to year.

**Table 2**

*Total Rating Point Ranges for Overall Ratings by School Type*

Overall Rating	Elementary	Middle	High
Excellent	61–100	56–100	67–100
Good	53–60	48–55	60–66
Average	42–52	36–47	51–59
Below Average	34–41	29–35	40–50
Unsatisfactory	0–33	0–28	0–39

*Note:* If a school tests fewer than 95% of eligible students, then the school's Rating for Academic Achievement shall be reduced by one Rating level and the school shall not be eligible for the highest overall Rating level.

## Section III: INDICATORS

Section 1111(c)(4)(B) of ESSA maintains the requirement that all accountability indicators (with the exception of English language proficiency progress, which is only reported for ELs) be reported for all students, as well as disaggregated and displayed separately for the following subgroups of students (defined in section 1111(b)(2)): students from major racial and ethnic groups, economically disadvantaged students (as compared to students who are not economically disadvantaged), children with disabilities (as compared to children without disabilities), and ELs.

ESSA provides additional specific subgroups of students for whom certain indicators must also be reported separately. Section 1111(b)(2)(B)(xi) requires academic achievement test results to be disaggregated by student gender and migrant status, in addition to the subgroups defined in section 1111(b)(2). Additional disaggregation requirements for specific report card indicators are described in the subsections of 1111(h)(1)(C) dealing specifically with each indicator. These details will be provided in the applicable section of this accountability manual.

For the purposes of the South Carolina accountability system, the EL population for subgroup reporting includes students who have achieved proficiency (coded in PowerSchool as M1, M2, M3, or M4; previously coded as P1, P2, P3, or P4), students who have not achieved proficiency (coded in PowerSchool as 1.0-6.0, A1, A2, A3), or students with waivers from services (coded as W) and students who have a missing composite score (coded as CM).

ESSA provides an exception to the requirement for disaggregation when the number of students in a subgroup is either too small to provide statistically reliable information or so small as to reveal personally identifiable information about an individual student. Thus, the results of a subgroup containing fewer than 20 students shall not be reported in South Carolina.

# **INDICATOR: Academic Achievement**

## **School Level: Elementary & Middle**

For each ELA and Mathematics academic achievement test (i.e., SC READY and SC ALT) administered to students at the school (or within the district or state, as appropriate for comparison metrics or for district or state report cards), aggregated scores are reported in two ways. First, the proportion of students who meet or exceed expectations is reported along with the number of students who meet or exceed expectations displayed as the numerator of a fraction with the total number of students included in the indicator displayed in the denominator.

Second, the proportion of all students who score at each separate achievement level (whether that achievement level was demonstrated via the SC READY or SC ALT) will be reported along with the proportion of students eligible to take the achievement test in question who were not tested. Each of the proportions displayed in this second, more detailed report of ELA and Mathematics academic achievement (including the proportion not tested) will be accompanied by the number of students who scored at the achievement level in question (or the number of students not tested) displayed as the numerator of a fraction with the total number of students included in the indicator displayed in the denominator.

As required by ESSA sections 1111(h)(1)(C)(ii) and 1111(h)(1)(C)(vii), proportions and numbers of students who meet or exceed expectations on academic assessments and who score at each separate achievement level on academic assessments (including the number and proportion of students not tested) shall be reported in the format described for all students included in the indicator, as well as disaggregated for students from major racial and ethnic groups, economically disadvantaged students (as compared to students who are not economically disadvantaged), children with disabilities (as compared to children without disabilities), English learners (ELs), students by gender, migrant students, students identified as homeless, students in foster care, and students with a parent or guardian who is a member of the Armed Forces (as defined in section 101(a)(4) of Title 10, United States Code).

All fractions reporting ELA and Mathematics academic achievement for all students included for each test (including the proportion of all students who meet or exceed expectations, the proportion of all students who score at each separate achievement level, as well as the proportion of all students not tested) are expected to have the same denominator, described in the forthcoming [“What Students are Included in the Indicator”](#) section. Fractions reporting the achievement of subgroups of students may not sum to the total number of all students included in the indicator for that test as subgroups containing fewer than 20 students shall not be reported.

### **Total Rating Points Available for the Indicator:**

**With  $\geq$  20 ELs: 35 points**

**With < 20 ELs: 40 points**

## What Students are Included in the Indicator:

- All students who are enrolled at the school in the content area and grade level assessed from the 45<sup>th</sup> day of the school year and on the 160<sup>th</sup> day of the school year, with no break in enrollment, regardless of whether the student took the assessment(s) in question, are included in the denominator for the calculation of school indicators.
- All students who are enrolled in the district in the content area and grade level assessed from the 45<sup>th</sup> day of the school year and on the 160<sup>th</sup> day of the school year, with no break in enrollment in the district, regardless of whether the student transferred between two or more schools within the district (including Residential Treatment Facilities and Group homes) and regardless of whether the student took the test in question, are included in the denominator for the calculation of district indicators for comparison metrics or for district report cards.
- All students who are enrolled in the state in the content area and grade level assessed from the 45<sup>th</sup> day of the school year and on the 160<sup>th</sup> day of the school year, with no break in enrollment in the state, regardless of whether the student transferred between two or more schools within the state (including Residential Treatment Facilities and Group homes) and regardless of whether the student took the assessment(s) in question, are included in the denominator for the calculation of state indicators for comparison metrics or for state report cards.
- All students eligible to take the SC READY or SC ALT in ELA or Math are included in the denominator when calculating the indicator unless excluded for an authorized and properly documented purpose described in the most recently released Students Not Tested Guidelines (found in the [School District Memoranda Archive](#)).
  - As of the publication of this manual, the most recent example of these guidelines was published on [May 14, 2019](#).
- Students who are not initially English proficient and whose entry into United States schools occurred after the 45<sup>th</sup> day of the prior academic year are excluded from both the numerator and denominator of this indicator.
- Students included in the denominator who are not tested are not included in the numerator when calculating the proportion of students who meet or exceed expectations.

*Note: EOCEP scores for middle school students who take an end-of-course assessment will not be included in the academic achievement indicator for middle schools. Students in middle school are still required to take EOCEP exams if they have been enrolled in those courses.*

## How Rating Points are Earned for the Indicator:

Rating Points are earned by first converting the observed Achievement Level for all students included in the indicator to Indicator Points according to Table 3.

**Table 3**

*Indicator Point Conversion for ELA and Mathematics Academic Achievement Tests*

Indicator Points	Achievement Level	SC READY Level Descriptor	SC ALT Level Descriptor
0	Level 1	Does Not Meet Expectations	Foundational
1	Level 2	Approaches Expectations	Emerging
2	Level 3	Meets Expectations	Meets
3	Level 4	Exceeds Expectations	Exceeds

*Note:* Students who are continuously enrolled at the school from the 45<sup>th</sup> day to the 160<sup>th</sup> day of the school year, with no break in enrollment, but who did not take the ELA or Mathematics academic achievement test are assigned zero (0) Indicator Points for the purposes of calculating Rating Points **unless the student in question is excluded for an authorized and properly documented purpose described in the most recently released Students Not Tested Guidelines (found in the [School District Memoranda Archive](#)).**

Rating Points are calculated for the school (or district or state for comparison metrics or for district or state report cards) according to the following equation:

$$RP = TPA \left( \frac{\sum_{t=1}^2 \left( \sum_{i=1}^n IP_{it} \right)}{\sum_{t=1}^2 \left( \sum_{i=1}^n 3 \right)} \right) \quad (1)$$

*Note:* RP = Rating Points. TPA = total points available for the indicator (i.e., 35 for schools with  $\geq 20$  ELs and 40 for schools with  $< 20$  ELs). IP = Indicator Points (according to conversions shown in Table 3).  $i$  = a student index (from 1 to  $n$ , the number of students included at the school).  $t$  = an index for the test (i.e., 1 = ELA and 2 = mathematics). The denominator includes the maximum number of Indicator Points possible (3) summed across all included students and tests.

Calculate the number of Rating Points earned according to the following steps:

1. For each student/test combination, convert the student's identified achievement level to Indicator Points using Table 3 (i.e.,  $IP_{it}$ ).
2. For each student/test combination, the maximum number of Indicator Points possible is determined (in this case, 3).
3. The sum of Indicator Points awarded is determined by summing across all included students and tests (i.e.,  $\sum_{t=1}^2 (\sum_{i=1}^n IP_{it})$ ).
4. The total Indicator Points possible is obtained by summing the maximum number of Indicator Points available (3) across students and tests (i.e.,  $\sum_{t=1}^2 (\sum_{i=1}^n 3)$ ).
5. The proportion of possible Indicator Points earned is obtained by dividing the total obtained in step 3 by the total obtained in step 4.
6. The number of Rating Points earned for schools for schools with  $\geq 20$  ELs is obtained by multiplying the proportion found in step 5 by 35, rounded to the hundredths place.
7. The number of Rating Points earned for schools for schools with  $< 20$  ELs is obtained by multiplying the proportion found in step 5 by 40, rounded to the hundredths place.

8. Finally, total Rating Points earned are converted to Ratings using Table 4.

**Table 4**

*Academic Achievement Rating Point Conversions to Ratings by School Type for Schools with and without 20 or More English Learners*

Rating	<u>Elementary Schools</u>		<u>Middle Schools</u>	
	With ELs	Without ELs	With ELs	Without ELs
Excellent	21.43 – 35.00	24.49 – 40.00	20.10 – 35.00	22.97 – 40.00
Good	18.55 – 21.42	21.19 – 24.48	16.72 – 20.09	19.11 – 22.96
Average	13.36 – 18.54	15.27 – 21.18	12.00 – 16.71	13.71 – 19.10
Below Average	9.62 – 13.35	10.99 – 15.26	8.37 – 11.99	9.57 – 13.70
Unsatisfactory	0.00 – 9.61	0.00 – 10.98	0.00 – 8.36	0.00 – 9.56

*Note:* If a school tests fewer than 95 percent of eligible students, then the school's Rating in Academic Achievement shall be reduced by one Rating level and the school shall also not eligible for the highest overall rating level. In addition, schools that test fewer than 95 percent of eligible students must submit a plan to the SCDE outlining how the school will increase the percentage of students tested.

## School Level: High

For each ELA and Mathematics EOCEP test (i.e., **English 1** and Algebra 1) administered to students in the four-year graduation cohort of the school (or within the district or state, as appropriate for comparison metrics or for district or state report cards), aggregated scores are reported in two ways. First, the proportion of all students who meet or exceed expectations (i.e., scored an A, B, or C on an EOCEP test or at the Meets or Exceeds level on the corresponding SC ALT assessment) is reported along with the number of students who meet or exceed expectations displayed as the numerator of a fraction with the total number of students included in the indicator displayed in the denominator.

Second, the proportion of all students who score at each separate achievement level (whether that achievement level was demonstrated via an EOCEP test or the corresponding SC ALT assessment) will be reported along with the proportion of students eligible to take the achievement test in question who were not tested. Each of the proportions displayed in this second, more detailed report of ELA and Mathematics academic achievement (including the proportion not tested) will be accompanied by the number of students who scored at the achievement level in question (or the number of students not tested) displayed as the numerator of a fraction with the total number of students included in the indicator displayed in the denominator.

As required by ESSA sections 1111(h)(1)(C)(ii) and 1111(h)(1)(C)(vii), proportions and numbers of students who meet or exceed expectations on academic assessments and who score at each separate achievement level on academic assessments (including the number and proportion of students not tested) shall be reported in the format described for all students included in the indicator, as well as disaggregated for students from major racial and ethnic groups, economically disadvantaged students (as compared to students who are not economically disadvantaged), children with disabilities (as compared to children without disabilities), English learners (ELs), students by gender, migrant students, students identified as homeless, students in foster care, and students with a parent or guardian who is a member of the Armed Forces (as defined in section 101(a)(4) of Title 10, United States Code).

All fractions reporting ELA and Mathematics academic achievement for all students included for each test (including the proportion of all students who meet or exceed expectations, the proportion of all students who score at each separate achievement level, as well as the proportion of all students not tested) are expected to have the same denominator, described in the forthcoming [“What Students are Included in the Indicator”](#) section. Fractions reporting the achievement of subgroups of students may not sum to the number of all students included in the indicator for that test as subgroups containing fewer than 20 students shall not be reported.

*Note: When reporting the proportion of students who scored at each individual achievement level on an EOCEP assessment (see Table 5), students who scored Foundational (Level 1) on the corresponding SC ALT assessment shall be included when calculating the proportion of students who scored an F, students who scored Emerging (Level 2) shall be included when calculating the proportion who scored a D, students who scored Meets (Level 3) shall be*



*included when calculating the proportion who scored a C, and students who scored Exceeds (Level 4) shall be included when calculating the proportion who scored a B.*

## **Total Rating Points Available for the Indicator:**

**With  $\geq 20$  ELs: 25 points**

**With  $< 20$  ELs: 30 points**

## **What Students are Included in the Indicator:**

- The expectation is that students in high school should take **English 1** and Algebra 1 courses and the corresponding end-of-course assessments by the end of their third year of high school.
- The high school Academic Achievement metric reports results based on 4-year graduation cohort base files for the school (or the district or the state, as appropriate for comparison metrics or for district or state report cards) as described in the [INDICATOR: Graduation Rate](#) section of this accountability manual.
- Students in the 4-year graduation cohort not excluded from the indicator for one of the reasons described in this section who do not have an appropriate EOCEP score or a score on the corresponding SC ALT assessment are included in the denominator of this indicator when calculating the proportion of all students who meet or exceed expectations but cannot be included in the numerator because of missing the test.
- Students awarded a transfer credit in Algebra 1 or **English 1** from accredited out-of-state schools (or in state from accredited sources other than the public schools as defined in Regulation 43-273) or awarded equivalent credit from home-school experiences pursuant to Chapter 65 of Title 59 of the Code of Laws are excluded from both the numerator and the denominator of this indicator.
- Students not tested for an authorized and properly documented purpose described in the most recently released Students Not Tested Guidelines (found in the [School District Memoranda Archive](#)) are excluded from both the numerator and denominator of this indicator.
  - As of the publication of this manual, the most recent example of these guidelines was published on [May 14, 2019](#).
- Students who are not initially English proficient and whose entry into United States schools occurred after the 45<sup>th</sup> day of the prior academic year are excluded from both the numerator and denominator of this indicator.
- Only the EOCEP Algebra 1 and **English 1**, or the appropriate corresponding SC ALT assessment, are included in this indicator and, for each student, the highest EOCEP score in each subject area that was obtained at any previous time is the score used for that student.

## How Rating Points are Earned for the Indicator:

Rating Points are earned by first converting the observed Achievement Level for all students included in the 4-year graduation cohort base file to Indicator Points according to Table 5.

**Table 5**

*Indicator Point Conversion for High School ELA and Mathematics Academic Achievement Tests*

Indicator Points	Achievement Level	EOCEP Exam Grade	SC ALT Level Descriptor
0	Level 1	F	Foundational
1	Level 2	D	Emerging
2	Level 3	C	Meets
3	Level 4	B	Exceeds
4	Level 5	A	

*Note:* Students who are included in the indicator but did not take the Algebra 1 or **English 1** EOCEP or the corresponding SC ALT academic achievement test are assigned zero (0) Indicator Points for the purposes of calculating Rating Points unless the student in question is excluded for an authorized and properly documented purpose described in the most recently released Students Not Tested Guidelines (found in the [School District Memoranda Archive](#)).

Rating Points are calculated for the school (or district or state for comparison metrics or for state or district report cards) according to the following equation:

$$RP = TPA \left( \frac{\sum_{t=1}^2 \left( \sum_{i=1}^n IP_{it} \right)}{\sum_{t=1}^2 \left( \sum_{i=1}^n 4 \right)} \right) \quad (2)$$

*Note:* RP = Rating Points. TPA = total points available for the indicator (i.e., 25 for schools with  $\geq 20$  ELs and 30 for schools with  $< 20$  ELs). IP = Indicator Points (according to conversions shown in Table 5).  $i$  = a student index (from 1 to  $n$ , the number of students included in the 4-year graduation cohort base file for the school).  $t$  = an index for the test (i.e., 1 = Algebra 1 and 2 = **English 1**). The denominator includes the maximum number of Indicator Points possible (4) summed across all included students and tests.

Calculate the number of Rating Points earned according to the following steps:

1. For each student/test combination, convert the student's identified achievement level to Indicator Points using Table 5 (i.e.,  $IP_{it}$ ).
2. For each student/test combination, the maximum number of Indicator Points possible is determined (in this case, 4).
3. The sum of Indicator Points awarded is determined by summing across all included students and tests (i.e.,  $\sum_{t=1}^2 (\sum_{i=1}^n IP_{it})$ ).
4. The sum of the possible Indicator Points possible is obtained by summing the maximum number of Indicator Points available across students and tests (i.e.,  $\sum_{t=1}^2 (\sum_{i=1}^n 4)$ ).
5. The proportion of possible Indicator Points earned is obtained by dividing the total obtained in step 3 by the total obtained in step 4.
6. The number of Rating Points earned for schools with  $\geq 20$  ELs is obtained by multiplying the proportion found in step 5 by 25, rounded to the hundredths place.

7. The number of Rating Points earned for schools with < 20 ELs is obtained by multiplying the proportion found in step 5 by 30, rounded to the hundredths place.
8. Finally, total Rating Points earned are converted to Ratings using Table 6.

**Table 6**

*Academic Achievement Rating Point Conversions to Ratings for High Schools with and without 20 or More English Learners*

Indicator	With ELs	Without ELs
Excellent	15.91 – 25.00	19.09 – 30.00
Good	13.45 – 15.90	16.14 – 19.08
Average	10.22 – 13.44	12.26 – 16.13
Below Average	7.22 – 10.21	8.66 – 12.25
Unsatisfactory	0.00 – 7.21	0.00 – 8.65

*Note:* If a school tests fewer than 95 percent of the students included in the 4-year graduation cohort base, then the school's Rating in Academic Achievement shall be reduced by one Rating level and the school shall also not eligible for the highest overall rating level. In addition, schools that test fewer than 95 percent of students included in the 4-year graduation cohort base must submit a plan to the SCDE outlining how the school will increase the percentage of students tested.

# **INDICATOR: Preparing for Success**

## **School Level: Elementary & Middle**

For each Science academic achievement test (i.e., SCPASS and SC ALT) administered to students at the school (or within the district or state, as appropriate for comparison metrics or for district or state report cards), aggregated scores are reported in two ways. First, the proportion of students who meet or exceed expectations is reported along with the number of students who meet or exceed expectations displayed as the numerator of a fraction with the total number of students included in the indicator displayed in the denominator.

Second, the proportion of all students who score at each separate achievement level (whether that achievement level was demonstrated via the SCPASS or SC ALT) will be reported along with the proportion of students eligible to take the achievement test in question who were not tested. Each of the proportions displayed in this second, more detailed report of Science academic achievement (including the proportion not tested) will be accompanied the number of students who scored at the achievement level in question (or the number of students not tested) displayed as the numerator of a fraction with the total number of students included in the indicator displayed in the denominator.

As required by ESSA sections 1111(h)(1)(C)(ii) and 1111(h)(1)(C)(vii), proportions and numbers of students who meet or exceed expectations on academic assessments and who score at each separate achievement level on academic assessments (including the number and proportion of students not tested) shall be reported in the format described for all students included in the indicator, as well as disaggregated for students from major racial and ethnic groups, economically disadvantaged students (as compared to students who are not economically disadvantaged), children with disabilities (as compared to children without disabilities), English learners (ELs), students by gender, migrant students, students identified as homeless, students in foster care, and students with a parent or guardian who is a member of the Armed Forces (as defined in section 101(a)(4) of Title 10, United States Code).

All fractions reporting Science academic achievement for all students included in this indicator (including the proportion of all students who meet or exceed expectations, the proportion of all students who score at each separate achievement level, as well as the proportion of all students not tested) are expected to have the same denominator, described in the forthcoming [“What Students are Included in the Indicator”](#) section. Fractions reporting the achievement of subgroups of students may not sum to the total number of all students included in the indicator as subgroups containing fewer than 20 students will not be reported.

### **Total Rating Points Available for the Indicator:**

**10 points**

## What Students are Included in the Indicator:

- All students who are enrolled at the school in the content area and grade level assessed from the 45<sup>th</sup> day of the school year and on the 160<sup>th</sup> day of the school year, with no break in enrollment, regardless of whether the student took the assessment(s) in question, are included in the denominator for the calculation of school indicators.
- All students who are enrolled in the district in the content area and grade level assessed from the 45<sup>th</sup> day of the school year and on the 160<sup>th</sup> day of the school year, with no break in enrollment in the district, regardless of whether the student transferred between two or more schools within the district and regardless of whether the student took the test in question, are included in the denominator for the calculation of district indicators for comparison metrics or for district report cards.
- All students who are enrolled in the state in the content area and grade level assessed from the 45<sup>th</sup> day of the school year and on the 160<sup>th</sup> day of the school year, with no break in enrollment in the state, regardless of whether the student transferred between two or more schools within the state and regardless of whether the student took the assessment(s) in question, are included in the denominator for the calculation of state indicators for comparison metrics or for state report cards.
- All students eligible to take the SCPASS or SC ALT in Science are included in the denominator when calculating the indicator unless excluded for an authorized and properly documented purpose described in the most recently released Students Not Tested Guidelines (found in the [School District Memoranda Archive](#)).
  - As of the publication of this manual, the most recent example of these guidelines was published on [May 14, 2019](#).
- Students who are not initially English proficient and whose entry into United States schools occurred after the 45<sup>th</sup> day of the prior academic year are excluded from both the numerator and denominator of this indicator.
- Students included in the denominator who are not tested are not included in the numerator when calculating the proportion of students who meet or exceed expectations.

*Note: EOCEP scores for students who take the Biology 1 end-of-course assessment in middle school will not be included in the Preparing for Success Indicator for middle schools.*

## How Rating Points are Earned for the Indicator:

Rating Points are earned by first converting the observed Achievement Level for all students included in the indicator to Indicator Points according to Table 7.

**Table 7**  
*Indicator Point Conversion for Science Academic Achievement Tests*

Indicator Points	Achievement Level	SCPASS Level Descriptor	SC ALT Level Descriptor
0	Level 1	Does Not Meet Expectations	Foundational
1	Level 2	Approaches Expectations	Emerging
2	Level 3	Meets Expectations	Meets
3	Level 4	Exceeds Expectations	Exceeds

*Note:* Students who are continuously enrolled at the school from the 45<sup>th</sup> day to the 160<sup>th</sup> day of the school year, with no break in enrollment, but who did not take the Science academic achievement test are assigned zero (0) Indicator Points for the purposes of calculating Rating Points unless excluded for an authorized and properly documented purpose described in the most recently released Students Not Tested Guidelines (found in the [School District Memoranda Archive](#)).

Rating Points are calculated for the school (or district or state for comparison metrics or for state or district report cards) according to the following equation:

$$RP = 10 \left( \left( \sum_{i=1}^n IP_i \right) / (n \times 3) \right) \quad (3)$$

*Note:* RP = Rating Points. IP = Indicator Points (according to conversions shown in Table 7).  $i$  = a student index (from 1 to  $n$ , the number of students included in the indicator). The denominator includes the maximum number of Indicator Points possible (3) multiplied by the number of students included in the indicator.

Calculate the number of Rating Points earned according to the following steps:

1. For each student, convert the student's identified achievement level to Indicator Points using Table 7.
2. For each student, the maximum number of Indicator Points possible is determined (in this case, 3).
3. The sum of Indicator Points awarded is determined by summing across all included students (i.e.,  $\sum_{i=1}^n IP_i$ ).
4. The sum of the possible Indicator Points possible is obtained by summing the maximum number of Indicator Points available across the number of students included in the indicator (i.e.,  $n \times 3$ ).
5. The proportion of possible Indicator Points earned is obtained by dividing the total obtained in step 3 by the total obtained in step 4.
6. The number of Rating Points earned is obtained by multiplying the proportion of points obtained in step 5 by 10, rounded to the hundredths place.
7. Finally, total Rating Points earned are converted to Ratings using Table 8.

**Table 8***Preparing for Success Rating Point Conversions to Ratings by School Type*

<b>Rating</b>	<b>Elementary Schools</b>	<b>Middle Schools</b>
Excellent	6.54 – 10.00	6.64 – 10.00
Good	5.76 – 6.53	5.75 – 6.63
Average	4.35 – 5.75	4.41 – 5.74
Below Average	3.22 – 4.34	3.23 – 4.40
Unsatisfactory	0.00 – 3.21	0.00 – 3.22

## School Level: High

Scores earned on EOCEP assessments in Biology 1 and US History and the Constitution, and the corresponding SC ALT assessments in Science and Social Studies are included in the Preparing for Success indicator for High Schools.

*Note: Due to delays caused by the transition to a new version of the exam necessitated by the approval and adoption of the 2019 South Carolina Social Studies College- and Career-Ready Standards, EOCEP scores in US History and the Constitution, and the corresponding SC ALT assessment in Social Studies, have been excluded from the Preparing for Success indicator for High Schools for the 2021-22 school year. The remainder of this section will only address EOCEP scores in Biology 1 and the corresponding SC ALT assessment in Science.*

For each Biology 1 test administered to students in the four-year graduation cohort of the school (or within the district or state, as appropriate for comparison metrics or for district or state report cards), aggregated scores are reported in two ways. First, the proportion of all students who meet or exceed expectations (i.e., scored an A, B, or C on an EOCEP test or at the Meets or Exceeds level on the corresponding SC ALT assessment) is reported along with the number of students who meet or exceed expectations displayed as the numerator of a fraction with the total number of students included in the indicator displayed in the denominator.

Second, the proportion of all students who score at each separate achievement level (whether that achievement level was demonstrated via an EOCEP test or the corresponding SC ALT assessment) will be reported along with the proportion of students eligible to take the achievement test in question who were not tested. Each of the proportions displayed in this second, more detailed report of ELA and Mathematics academic achievement (including the proportion not tested) will be accompanied the number of students who scored at the achievement level in question (or the number of students not tested) displayed as the numerator of a fraction with the total number of students included in the indicator displayed in the denominator.

As required by ESSA sections 1111(h)(1)(C)(ii) and 1111(h)(1)(C)(vii), proportions and numbers of students who meet or exceed expectations on academic assessments and who score at each separate achievement level on academic assessments (including the number and proportion of students not tested) shall be reported in the format described for all students included in the indicator, as well as disaggregated for students from major racial and ethnic groups, economically disadvantaged students (as compared to students who are not economically disadvantaged), children with disabilities (as compared to children without disabilities), English learners (ELs), students by gender, migrant students, students identified as homeless, students in foster care, and students with a parent or guardian who is a member of the Armed Forces (as defined in section 101(a)(4) of Title 10, United States Code).

All fractions reporting Science academic achievement for all students included in this indicator (including the proportion of all students who meet or exceed expectations, the proportion of all students who score at each separate achievement level, as well as the proportion of all students not tested) are expected to have the same denominator, described in the forthcoming [“What](#)



[Students are Included in the Indicator](#)” section. Fractions reporting the achievement of subgroups of students may not sum to the number of all students included in the indicator as subgroups containing fewer than 20 students shall not be reported.

*Note: When reporting the proportion of students who scored at each individual achievement level on an EOCEP assessment, students who scored Foundational (Level 1) on the corresponding SC ALT assessment shall be included when calculating the proportion of students who scored an F, students who scored Emerging (Level 2) shall be included when calculating the proportion who scored a D, students who scored Meets (Level 3) shall be included when calculating the proportion who scored a C, and students who scored Exceeds (Level 4) shall be included when calculating the proportion who scored a B.*

## **Total Rating Points Available for the Indicator:**

**5 points**

## **What Students are Included in the Indicator:**

- The Preparing for Success metric reports results based on 4-year graduation cohort base files for the school (or the district or the state, as appropriate for comparison metrics or for district or state report cards) as described in the [INDICATOR: Graduation Rate](#) section of this manual.
- Students in the 4-year graduation cohort who do not have an appropriate EOCEP score or a score on the corresponding SC ALT assessment are included in the denominator of this indicator when calculating the proportion of all students who meet or exceed expectations but cannot be included in the numerator because of missing the test.
- Students not tested for an authorized and properly documented purpose described in the most recently released Students Not Tested Guidelines (found in the [School District Memoranda Archive](#)) are excluded from both the numerator and denominator of this indicator.
  - As of the publication of this manual, the most recent example of these guidelines was published on [May 14, 2019](#).
- Students awarded a transfer credit in Biology 1 from accredited out-of-state schools (or in state from accredited sources other than the public schools as defined in Regulation 43-273) or awarded equivalent credit from home-school experiences pursuant to Chapter 65 of Title 59 of the Code of Laws are excluded from both the numerator and the denominator of this indicator.
- Students who are not initially English proficient and whose entry into United States schools occurred after the 45<sup>th</sup> day of the prior academic year are excluded from both the numerator and denominator of this indicator.
- Only the EOCEP Biology 1, or the appropriate corresponding SC ALT assessment, are included in this indicator and, for each student, the highest EOCEP score is the score used for that student.

## How Rating Points are Earned for the Indicator:

Rating Points are earned by first converting the observed Achievement Level for all students included in the 4-year graduation cohort base file to Indicator Points according to Table 9.

**Table 9**

*Indicator Point Conversion for the High School Biology 1 EOCEP Exam*

Indicator Points	Achievement Level	EOCEP Exam Grade	SC ALT Level Descriptor
0	Level 1	F	Foundational
1	Level 2	D	Emerging
2	Level 3	C	Meets
3	Level 4	B	Exceeds
4	Level 5	A	

*Note:* Students who are included in the indicator but did not take the Biology 1 or corresponding SC ALT Science test are assigned zero (0) Indicator Points for the purposes of calculating Rating Points **unless excluded for an authorized and properly documented purpose described in the most recently released Students Not Tested Guidelines (found in the [School District Memoranda Archive](#))**.

Rating Points are calculated for the school (or district or state for comparison metrics or for state or district report cards) according to the following equation:

$$RP = 5 \left( \left( \sum_{i=1}^n IP_i \right) / (n \times 4) \right) \quad (4)$$

*Note:* RP = Rating Points. IP = Indicator Points (according to conversions shown in Table 9).  $i$  = a student index (from 1 to  $n$ , the number of students included in the 4-year graduation cohort base file for the school). The denominator includes the maximum number of Indicator Points possible (4) multiplied by the number of students included in the 4-year graduation cohort base file for the school.

Calculate the number of Rating Points earned according to the following steps:

1. For each student, convert the student's identified achievement level to Indicator Points using Table 9.
2. For each student, the maximum number of Indicator Points possible is determined (in this case, 4).
3. The sum of Indicator Points awarded is determined by summing across all included students (i.e.,  $\sum_{i=1}^n IP_i$ ).
4. The sum of the possible Indicator Points possible is obtained by summing the maximum number of Indicator Points available across the number of students included in the 4-year graduation cohort base file for the school (i.e.,  $n \times 4$ ).
5. The proportion of possible Indicator Points earned is obtained by dividing the total obtained in step 3 by the total obtained in step 4.
6. The number of Rating Points earned is obtained by multiplying the proportion of points obtained in step 5 by 5, rounded to the hundredths place.
7. Finally, total Rating Points earned are converted to Ratings using Table 10.

**Table 10**

*Preparing for Success Rating Point Conversions to  
Ratings for High Schools*

<b>Indicator</b>	<b>Rating Points</b>
Excellent	3.10 – 5.00
Good	2.65 – 3.09
Average	1.87 – 2.64
Below Average	1.21 – 1.86
Unsatisfactory	0.00 – 1.20

## **INDICATOR: English Learners' Progress**

### **School Level: Elementary, Middle, & High**

This indicator assesses growth toward the exit criteria for South Carolina's English Learners (EL) program which is to be achieved within five years after the initial assessment of English as a Second Language (ESL) as stipulated in the State's approved ESSA plan. The state's definition of English proficiency on ACCESS is a 4.4 (Bridging composite score) with no sub-score below 4.0 in reading, writing, speaking, or listening. A series of interim targets have been developed to measure the percentage of students that either have either achieved proficiency or who are on-track to achieve proficiency within 5 years of beginning the EL program (see Table 11). This allows students to have expected growth targets towards proficiency every year. Report the proportion of ELs at the school who have met or exceeded their current annual interim target to achieve English language proficiency within 5 years of beginning the EL program.

*Note: Do not report this indicator for schools or districts with fewer than 20 students identified as English learners (ELs) who are eligible to be included in the English Learners' Proficiency (ELP) metric. All ELs are included in the calculation of a District ELP metric regardless of whether that EL is reported at the school level.*

### **Total Rating Points Available for the Indicator:**

**10 points**

*Note: Schools or districts with fewer than 20 ELs do not receive a rating for this indicator.*

### **What Students are Included in the Indicator:**

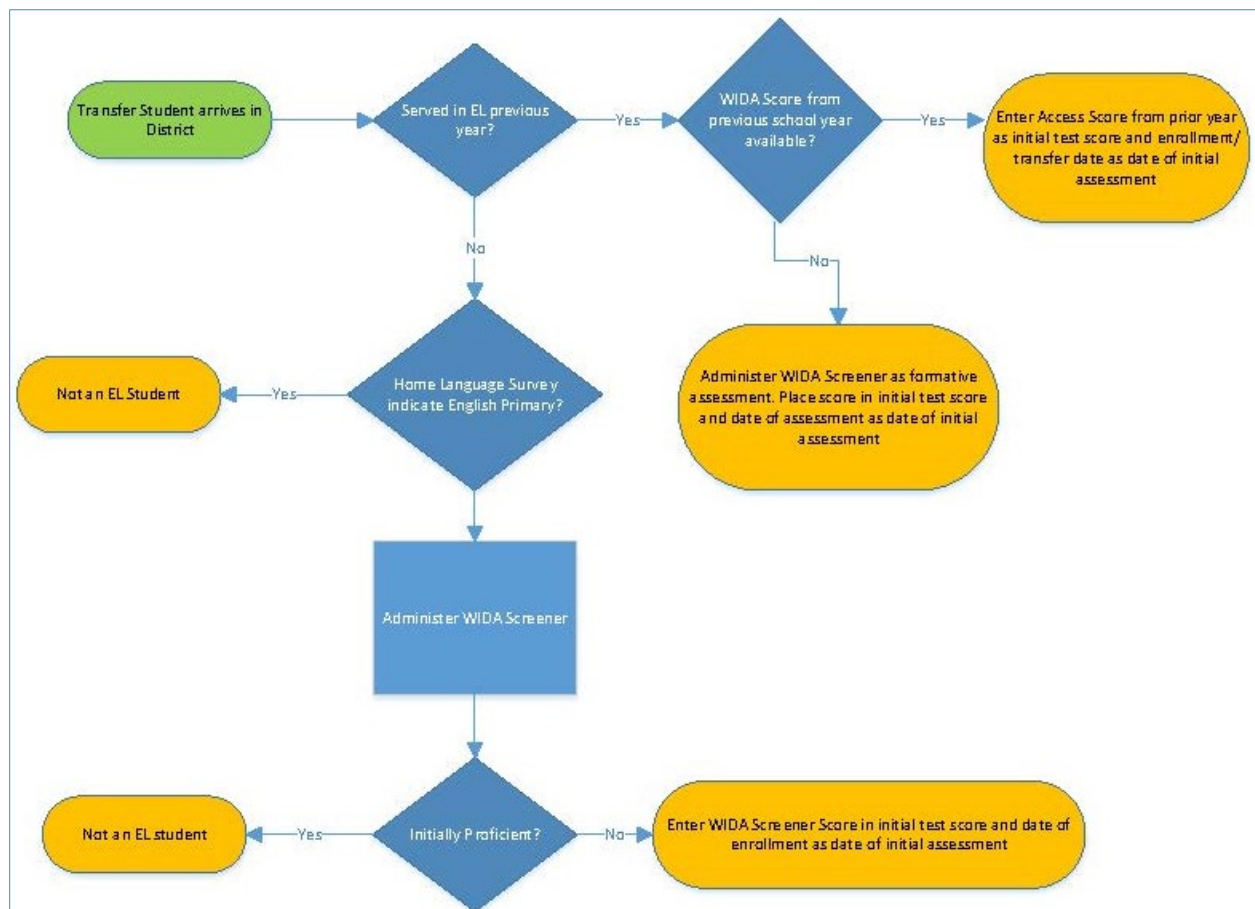
- For the purposes of the South Carolina accountability system, the EL population includes students who have achieved proficiency (coded in PowerSchool as M1, M2, M3, or M4; previously coded as P1, P2, P3, or P4), students who have not achieved proficiency (coded in PowerSchool as 1.0-6.0, A1, A2, A3), or students with waivers from services (coded as W) and students who have a missing composite score (coded as CM).
- All ELs who are enrolled at the school from the 45<sup>th</sup> day of the school year and on the 160<sup>th</sup> day of the school year, with no break in enrollment are included in the denominator for the calculation of school indicators.
- All ELs who are enrolled in the district from the 45<sup>th</sup> day of the school year and on the 160<sup>th</sup> day of the school year, with no break in enrollment in the district, regardless of whether the student transferred between two or more schools within the district, are included in the denominator for the calculation of district indicators for comparison metrics or for district report cards.
- All ELs who are enrolled in the state from the 45<sup>th</sup> day of the school year and on the 160<sup>th</sup> day of the school year, with no break in enrollment in the state, regardless of whether the student

transferred between two or more schools within the state, are included in the denominator for the calculation of state indicators for comparison metrics or for state report cards.

- Students included in the denominator who do not have an English language proficiency score for the current school year cannot be included in the numerator when calculating the proportion of students who meet or exceed English language proficiency expectations.

The SCDE Office of Federal and State Accountability has created Figure 1 to help guide school and district staff in assessing EL students:

**Figure 1**  
*EL Assessment and Identification Flowchart*



## How Rating Points are Earned for the Indicator:

Rating Points are awarded for the percentage of ELs who score a composite 4.4 or who achieve the interim target based on their initial identification and number of years in South Carolina's English Learners (EL) program. Annually, points are earned for the percentage of ELs meeting expected growth targets on ACCESS 2.0 or the Access-ALT using the values shown in Table 11. This allows students to have expected growth targets towards proficiency every year.

**Table 11***Annual On-Track English Proficiency Targets for ELs based on Initial Screener Level*

Screener Level	Year 1	Year 2	Year 3	Year 4	Year 5+
1	1.9	2.9	3.8	4.1	4.4
2	2.6	3.2	3.8	4.1	4.4
3	3.3	3.6	3.8	4.1	4.4
4	4.1	4.2	4.3	4.4	4.4
Access-ALT	A1	A2	A3	P1	P1

The proportion of EL students demonstrating one year's academic progress in attaining English proficiency is determined by the following steps:

**(1) Determine the qualifying population (denominator):**

- Select active LEP students (eslcode =1-6.0, M1-M4, W, X, CM, and grade = 0-12) from PowerSchool 180-day extraction. Remove duplicates by keeping most recent record for each student.
- Remove students who were not continuously enrolled on or before the 45<sup>th</sup> day of the same school year within the same school.
- From the *ELL Initial Proficiency* information in PowerSchool, use the "Date of Initial Test" field to calculate "years in the program." Use the "Score on Initial Test" as the "screener level."

**If the above information is missing, use the following steps (Steps 1-3) to fill in missing information.**

**Step 1:** Match with PowerSchool special program table to find the student's **very first** program entry date to fill in missing "Date of Initial Test" to calculate "years in the program." If program entry date is 01/01/1900, replace with corresponding year's PowerSchool "Enter Date."

**Step 2:** Match with longitudinal LEP dataset to obtain students' historical ACCESS test records.

**Step 3:** If "Score on Initial Test" is missing, replace with student's first ACCESS test score. Find the first ACCESS test score for each student and round down to create the "screener level."

Using "firstdate" to calculate "years of study." When calculating years in program, a universal anniversary date of October 1st will be used. Students with an enrollment date or assessment date on or before October 1 will be assigned a year 1 target for the ELP indicator in that school year, and subsequent year targets will be determined from this year. The difference between the "firstdate" and universal anniversary date of October 1 will be calculated as "years of study."

After above steps, if “years of study” cannot be calculated because of missing “firstdate,” set “gradelevel” to be “years.”

**(2) Calculate the goal for the year**

- Match with target table using “screen level” and “years” to calculate the goal for each student. Apply the following assumptions to resolve some students’ issues. If “years” is greater or equal to 5 or “screenlevel” is at least 5, the goal is set as 4.4. If “screenlevel” is missing, the goal is set at 4.4.
- Compare student’s current ACCESS test score with calculated goal to determine whether student “met” or has “not met” the goal.

*Note: Students on monitoring status (i.e., coded as M1-M4) are considered proficient and have met their annual goal for the purposes of calculating this indicator.*

**(3) For students taking alternative test use the following special steps to determine their goal.**

- For students of 1 year’s study, the student needs to score A1, A2, A3, P1, or P2 to meet their goal.
- For students of 2 year’s study, the student needs to score A2, A3, P1, or P2 to meet their goal.
- For students of 3 year’s study, the student needs to score A3, P1 or P2 to meet their goal.
- For students of 4 or more years of study, the student needs to score P1 or P2 to meet their goal.

**(4) Calculate proportion of Students Meeting Proficiency Targets**

- Match the student level table with the master file to output each student to schools by level.
- Divide the number of EL students meeting their goal in the school by the total number of EL students in the school to calculate the percentage of students meeting their goal by school. Results are masked if the school has fewer than 20 EL students assessed.
- Divide the number of EL students meeting their goal in the district by the total number of EL students in the district to calculate the percentage of students meeting their goal by district. Results are masked if the district has fewer than 20 EL students assessed.
- Using student file, divide the number of EL students meeting their goal in the state by the number of EL students in the state to calculate the percentage of students meeting their goal for state.

**(5) Calculate the Number of Points Earned**

- Multiply the percentage of students meeting their target expressed as a decimal by 10, rounded to hundredths (e.g., 84.3% meeting target:  $.843 \times 10 = 8.43$  Rating Points).
- Finally, total Rating Points earned are converted to Ratings using Table 12.

**Table 12**  
*English Learners' Progress Rating Point  
 Conversions to Ratings*

<b>Rating</b>	<b>Rating Points</b>
Excellent	8.00 – 10.00
Good	6.00 – 7.99
Average	4.00 – 5.99
Below Average	2.00 – 3.99
Unsatisfactory	0.00 – 1.99



## INDICATOR: Student Progress

### School Level: Elementary & Middle

Per S.C. Code § 59-18-1960, state law requires a value-added system for the calculation of student progress or growth. The academic progress in ELA and Mathematics of all students at the school is compared to other students in South Carolina who initially scored at similar levels to calculate an index of student progress (ISP) for all students ( $ISP^{all}$ ), and the academic progress of the students in the school with the lowest 20% of prior achievement is also compared to students statewide who initially scored at similar levels to calculate an ISP for the lowest quintile ( $ISP^{low}$ ). Measures of progress from these two groups of students are combined to create a combined ISP for the school ( $ISP^{sch}$ ). This indicator applies to elementary and middle schools.

Student Progress at the school shall be displayed in two ways. First,  $ISP^{sch}$  shall be displayed, with the number of students on whose basis the metric was calculated, alongside comparison metrics displaying the mean  $ISP^{sch}$  of all schools in the district as well as the mean  $ISP^{sch}$  of all schools in the state. Second,  $ISP^{all}$  and  $ISP^{low}$  for the school shall each be displayed separately, with the number of students on whose basis the metrics were calculated, alongside comparison metrics displaying the mean  $ISP^{all}$  and  $ISP^{low}$  of all schools in the district as well as the mean  $ISP^{all}$  and  $ISP^{low}$  of all schools in the state.

As required by ESSA section 1111(c)(4)(B),  $ISP^{sch}$ ,  $ISP^{all}$ , and  $ISP^{low}$  shall be disaggregated and displayed separately for the following subgroups of students (defined in section 1111(b)(2)): students from major racial and ethnic groups, economically disadvantaged students (as compared to students who are not economically disadvantaged), children with disabilities (as compared to children without disabilities), and ELs.

### Total Rating Points Available for the Indicator:

**With  $\geq 20$  ELs: 35 points**

**With  $< 20$  ELs: 40 points**

### What Students are Included in the Indicator:

- All students who are enrolled in the school on the 45<sup>th</sup> day of the school year and on the 160<sup>th</sup> day of the school year, with no break in enrollment, who have ELA or mathematics academic achievement test scores from the current school year and the previous school year are used to calculate  $ISP^{all}$ , regardless of the school at which the prior year score was obtained.
- The students used to calculate  $ISP^{all}$  who have lowest 20% of prior achievement are used to create  $ISP^{low}$ . If 20% of the students used to calculate  $ISP^{all}$  is fewer than 20 students, then the 20 students with the lowest prior achievement are used to create  $ISP^{low}$ .

## How Rating Points are Earned for the Indicator:

Calculate the number of Rating Points earned according to the following steps:

1. Growth indices are provided to schools and districts on a scale that generally ranges from 6 to -6. Prior to calculating  $ISP^{all}$  and  $ISP^{low}$ :
  - All growth indices greater than 6 are assigned a growth index of 6.
  - All growth indices less than -6 are assigned a growth index of -6.
2. Calculate  $ISP^{all}$  as follows:
  - Average the growth indices for all students at the school for all subjects and grade levels within the grade band reported (e.g., grade 4 ELA, grade 4 mathematics, grade 5 ELA, and grade 5 mathematics, for an elementary school serving students in kindergarten through grade 5).
  - Multiply the average growth index by 20/6 and add 20 to the result, rounding to the nearest hundredth (e.g., 16.47).
3. Calculate  $ISP^{low}$  as follows:
  - Average the growth indices for the students at the school with the lowest 20% prior achievement (or the 20 students with the lowest prior achievement, as applicable) for all subjects and grade levels within the grade band reported (e.g., grade 7 ELA, grade 7 mathematics, grade 8 ELA, and grade 8 mathematics for a middle school serving only students grade 7 and grade 8).
  - Multiply the average growth index by 20/6 and add 20 to the result, rounding to the nearest hundredth (e.g., 17.64).
4. Calculate  $ISP^{sch}$  by taking the average of  $ISP^{all}$  and  $ISP^{low}$ , rounding the result to the nearest hundredth (e.g., 17.06).
5. Rating Points for schools with < 20 ELs are equal to the value of  $ISP^{sch}$ .
6. Rating Points for schools with  $\geq 20$  ELs are equal to the value of  $ISP^{sch}$  multiplied by 35/40.
7. Finally, total Rating Points earned are converted to Ratings using Table 13.

**Table 13**

*Student Progress Ratings Point Conversions to Ratings by School Type for Schools with and without 20 or More English Learners*

Rating	<u>Elementary Schools</u>		<u>Middle Schools</u>	
	With ELs	Without ELs	With ELs	Without ELs
Excellent	24.57 – 35.00	28.08 – 40.00	27.20 – 35.00	31.08 – 40.00
Good	19.78 – 24.56	22.60 – 28.07	20.72 – 27.19	23.68 – 31.07
Average	14.32 – 19.77	16.36 – 22.59	12.49 – 20.71	14.27 – 23.67
Below Average	9.06 – 14.31	10.35 – 16.35	5.64 – 12.48	6.45 – 14.26
Unsatisfactory	0.00 – 9.05	0.00 – 10.34	0.00 – 5.63	0.00 – 6.44

## **INDICATOR: Graduation Rate**

### **School Level: High**

This indicator reports the proportion of students who graduate from high school within four full years of their initial enrollment unless the student meets one of the approved reasons for removal from the cohort (documentation of transfer to another diploma-granting high school, emigration to another country, transfer to prison or juvenile facility following adjudication, or death). All students in the graduation cohort for the current year as defined by their ninth grade code (9GR) are included, as assigned to the school of their enrollment on the 180th day.

The Graduation Rate shall be calculated based on the number of students who earned a regular high school diploma divided by the total number of students in the four-year graduation cohort for the school (or within the district or state, as appropriate for comparison metrics or for district or state report cards). The graduation rate shall be reported as a percentage along with the number of students who earned a regular high school diploma from the school (or within the district or state, as appropriate for comparison metrics or for district or state report cards) expressed as the numerator of a fraction with the total number of students included in the indicator displayed in the denominator, along with comparison metrics displaying the percentage and number of students who earned a regular high school diploma in the district and in the state.

As required by ESSA section 1111(h)(1)(C)(iii), the Graduation Rate shall be reported in the format described for all students included in the indicator, as well as disaggregated for students from major racial and ethnic groups, economically disadvantaged students (as compared to students who are not economically disadvantaged), children with disabilities (as compared to children without disabilities), English learners (ELs), students identified as homeless, and students in foster care.

### **Total Rating Points Available for the Indicator:**

**With  $\geq$  20 ELs: 25 points**

**With  $<$  20 ELs: 30 points**

### **What Students are Included in the Indicator:**

- A student is initially added to the four-year graduation cohort if the student is present on the 45<sup>th</sup> day of their first year in high school. The 9GR shall be set to the two digit year of the spring semester during which the student first attended high school (e.g., students for whom the 2021-2022 school year is their first year in high school will have 9GR = 22).
- All students whose initial enrollment as a 9<sup>th</sup> grade student was three years prior to the current school year (i.e., students who began high school during the 2018-19 school year, or 9GR = 19, are included for 2021-22 Report Cards) are included in the 4-year graduation cohort base files for the last high school at which they were enrolled as of the 180<sup>th</sup> day unless the student meets one of the approved reasons for removal from the cohort (detailed next).

- Students shall be removed from the cohort for the following reasons: student death, emigration, transfer to prison or juvenile facility following adjudication, and properly documented transfer.
- Students shall be added to the cohort when they transfer into a high school from in-state or out-of-state institutions.
- All students assigned to the 4-year graduation cohort base files of any high school within a district shall be included in the base file for the district (including Residential Treatment Facilities and Group homes).
- All students assigned to the 4-year graduation cohort base files of any high school within the state shall be included in the base file for the state (including Residential Treatment Facilities and Group homes).
- Students who meet the state diploma requirements as a result of completing requirements in the summer following their fourth year will have graduated prior to beginning a fifth year of high school and will count in the calculation of the on-time graduation rate.

## How Rating Points are Earned for the Indicator:

Rating Points are calculated for schools with  $\geq 20$  ELs according to the following equation:

$$RP_{25} = \left( \left( \frac{\text{Grads}}{\text{Cohort}} \times 100 \right) - 50 \right) / 2 \quad (5)$$

Note:  $RP_{25}$  = Rating Points on a 25-point scale. Grads = number of students who earned a regular high school diploma. Cohort = number of students in the four-year graduation cohort.

Rating Points are calculated for schools with  $< 20$  ELs according to the following equation:

$$RP_{30} = RP_{25} \times 30/25 \quad (6)$$

Note:  $RP_{30}$  = Rating Points on a 30-point scale.  $RP_{25}$  = Rating Points on a 25-point scale calculated via equation (5).

Calculate the number of Rating Points earned according to the following steps:

1. Determine the four-year graduation cohort for the school (as described in the [What Students are Included in the Indicator](#) section above).
2. Determine the number of students in the four-year graduation cohort who earned a regular high school diploma.
3. Divide the number obtained in step 2 by the number obtained in step 1.
4. Multiply the quotient by 100.
5. Subtract 50 from the product.
6. Divide the difference by 2.
7. The quotient obtained in step 6, rounded to the nearest hundredth (e.g., 16.65), is the number of Rating Points for a school with  $\geq 20$  ELs.
8. Multiply the quotient obtained in **step 6** by 30/25 and round to the nearest hundredth (e.g., 19.98) to obtain the number of Rating Points for a school with  $< 20$  ELs.

9. Finally, total Rating Points earned are converted to Ratings using Table 14. Per this table, any high school with a graduation rate of less than 70% is deemed Unsatisfactory and any high school which exceeds the state goal of 90% graduation rate is deemed Excellent.

**Table 14**

*Graduation Rate Rating Point Conversions to Ratings by School Type for Schools with and without 20 or More English Learners*

<b>Rating</b>	<b>With ELs</b>	<b>Without ELs</b>
Excellent	20.00 – 25.00	20.00 – 30.00
Good	16.01 – 19.99	19.21 – 23.99
Average	13.01 – 16.00	15.61 – 19.20
Below Average	10.01 – 13.00	12.01 – 15.60
Unsatisfactory	0.00 – 10.00	0.00 – 12.00

# INDICATOR: College & Career Readiness

## School Level: High

The proportion of students in a high school's graduation cohort who are identified as either college or career ready according to one or more of the approved methods of demonstrating readiness are displayed in two ways. First, report the proportion of all students in the current four-year graduation cohort for the school (or within the district or state, as appropriate for comparison metrics or for district or state report cards), regardless of graduation status, who (a) are identified as *either* College Ready *or* Career Ready, (b) are identified as *both* College Ready *and* Career Ready, (c) are identified as College Ready, and (d) are identified as Career Ready. For all four metrics, the proportion of students in the 9GR cohort shall be accompanied by the number of students demonstrating readiness displayed as the numerator of a fraction with the total number of students in the 9GR cohort displayed in the denominator, as well as comparison metrics showing the proportion of students demonstrating readiness for the district and state.

As required by ESSA section 1111(c)(4)(B), College & Career Readiness (CCR) shall be disaggregated and displayed separately for the following subgroups of students (defined in section 1111(b)(2)): students from major racial and ethnic groups, economically disadvantaged students (as compared to students who are not economically disadvantaged), children with disabilities (as compared to children without disabilities), and ELs. Consistent with other indicators, CCR metrics shall not be reported when derived from fewer than 20 students.

### Total Rating Points Available for the Indicator:

**25 points**

### What Students are Included in the Indicator:

- The CCR metric reports results based on 4-year graduation cohort base files for the school (or the district or the state, as appropriate for comparison metrics or for district or state report cards) as described in the [INDICATOR: Graduation Rate](#) section of this manual.

### How Can a Student be Identified as College Ready?

A student is deemed “college-ready” if the student met one or more of the following criteria:

- Scores a composite score of 20 or higher on the ACT.
- Scores a composite score of 1020 or higher on the SAT.
- Scores a 3 or higher on an Advanced Placement (AP) exam.
- Scores a C or higher in any Advanced Level (A) Cambridge International Exam or scores a C or higher in an Advanced Subsidiary (AS) Level Cambridge International Exam in Biology, Chemistry, Computer Science, Economics, English, Environmental Science/Management, History, Politics, Psychology, or foreign language (Chinese, French, German, Japanese or Spanish).

- Scores a 4 or higher on any International Baccalaureate (IB) assessment. Only higher learning (HL) exams may count.
- Completes at least six (6) credit hours in approved dual enrollment courses (a current list of approved courses can be found in the “Download Data” section of the [SC School Report Card](#) website) with a grade of C or higher.

## How Can a Student be Identified as Career Ready?

A student is deemed “career-ready” if the student met one or more of the following criteria:

- Is a CTE completer and earns a national industry credential or a state industry credential as determined by the business community (<https://ed.sc.gov/instruction/career-and-technical-education/programs-and-courses/cate-programs/2020-21-cte-career-ready-certifications/>).
- Earns a Silver, Gold or Platinum National Career Readiness Certificate on the **ACT** WorkKeys exam or Silver, Gold or Platinum Credential on the WIN Ready to Work Career Assessment.
- Earns a scale score of 31 or higher on the ASVAB.
- Successfully completes a state-approved work-based learning exit evaluation from an employer. The work-based learning program must include:
  - Training agreement which defines a combination of objectives and a minimum of 40 practical experience hours or the highest number of hours required by industry defined competencies in a career pathway;
  - Be aligned with state IGP career clusters;
  - Include an industry evaluation that is created from the training agreement, which includes the world-class skills from the Profile of the South Carolina Graduate; and
  - The student must have earned a minimum of one unit in the pathway related to the work-based placement or completed a personal pathway of study.
- Is identified as a student with a disability who successfully completes the South Carolina High School Employability Credential (<https://ed.sc.gov/districts-schools/special-education-services/programs-and-initiatives-p-i/sc-employability-credential/>) according to their Individualized Education Plan (IEP).

## How Rating Points are Earned for the Indicator:

Rating Points are calculated for high schools according to the following equation:

$$RP = \frac{CCR}{Cohort} \times 25 \quad (7)$$

Note: RP = Rating Points. CCR = the number of students who have been identified as either college ready or career ready, regardless of graduation status. Cohort = number of students in the four-year graduation cohort.

Calculate the number of Rating Points earned according to the following steps:

1. Determine the four-year graduation cohort for the school (as described in the [INDICATOR: Graduation Rate](#) section).
2. Determine the number of students in the four-year graduation cohort who have met at least one of the College Ready or Career Ready criteria.

3. Divide the number found in step 2 by the number found in step 1.
4. Multiply the quotient obtained in step 3 by 25 and round to the nearest hundredth (e.g., 19.98) to obtain the number of Rating Points.
5. Finally, total Rating Points earned are converted to Ratings using Table 15.

**Table 15**  
*College/Career Readiness Rating Point  
Conversions to Ratings*

Rating	Rating Points
Excellent	19.50 – 25.00
Good	17.00 – 19.49
Average	12.50 – 16.99
Below Average	8.50 – 12.49
Unsatisfactory	0.00 – 8.49



## INDICATOR: School Climate

### School Level: Elementary, Middle, & High

Section 1111(c)(4)(B)(v) of ESSA requires at least one indicator of school quality or student success. South Carolina uses teachers' and students' perceptions of school climate, as measured by the school climate surveys developed per the Education Accountability Act of 1998, which have been given annually since their development. Prior research has found a stable factor structure, and significant relationships between the stakeholder perception factors measured and positive school outcomes.<sup>1</sup> The School Climate ( $SC^{sch}$ ) indicator will be calculated based on the combination of three teacher perception factors and two student perception factors. Specifically,  $SC^{sch}$  will be derived from Teacher Perceptions of Instructional Focus ( $IF^T$ ), Teacher Perceptions of Working Conditions ( $WC^T$ ), Teacher Perceptions of Safety ( $S^T$ ), Student Perceptions of Social-Physical Environment ( $SPE^S$ ), and Student Perceptions of Safety ( $S^S$ ). The  $SPE^S$  factor score shall not be reported or used in calculating  $SC^{sch}$  for online or virtual schools.

School Climate shall be displayed in two ways. First,  $SC^{sch}$  shall be displayed, with the number of students on whose basis the metric was calculated, alongside comparison metrics displaying the  $SC^{sch}$  for the district as well as the  $SC^{sch}$  for the state. Second,  $IF^T$ ,  $WC^T$ ,  $S^T$ ,  $SPE^S$ , and  $S^S$  for the school shall each be displayed separately, with the number of students on whose basis the metrics were calculated, alongside comparison metrics displaying the values of these same metrics for the district as well as for the state.

As required by ESSA section 1111(c)(4)(B),  $SC^{sch}$ ,  $IF^T$ ,  $WC^T$ ,  $S^T$ ,  $SPE^S$ , and  $S^S$  shall be disaggregated and displayed separately for the following subgroups of students (defined in section 1111(b)(2)): students from major racial and ethnic groups, economically disadvantaged students (as compared to students who are not economically disadvantaged), children with disabilities (as compared to children without disabilities), and ELs. Consistent with other indicators,  $SC^{sch}$ ,  $SPE^S$ , and  $S^S$  shall not be reported when derived from fewer than 20 student respondents. In addition,  $SC^{sch}$ ,  $IF^T$ ,  $WC^T$ , and  $S^T$  shall not be reported when derived from fewer than 10 teacher respondents. The scores of all students and teachers shall still be included in the calculation of indicators and metrics for the district or the state, even if they are not reported at the school level.

*Note: Rating Points will NOT be adjusted for schools with participation rates of less than 80% this year. Participation rate requirements will be restored in subsequent school years.*

---

<sup>1</sup> See the following references, among others:

Gareau, S., May, J., Mindrila, D., Ishikawa, T., DiStefano, C., Monrad, D.M., & Price, K. (2010, May). *The relationship between school climate and school performance*. Paper presented at the annual meeting of the American Educational Research Association, Boulder, CO.

Monrad, D.M., Ishikawa, T., DiStefano, C., Ene, M., Leighton, E., Huguley, S., Guo, Z., & McGrath, K. (2016). *School climate and student achievement outcomes*, Columbia, SC: University of South Carolina, South Carolina Educational Policy Center.

Monrad, D.M., May, J., DiStefano, C., Smith, J., Gay, J., Mindrila, D., Gareau, S., & Rawls, A. (2008, March). *Parent, student, and teacher perceptions of school climate: Investigations across organizational levels*. Paper presented at the annual meeting of the American Educational Research Association, New York, NY.

## Total Rating Points Available for the Indicator:

10 points

## What Teachers are Included in the Indicator:

- All teachers who are employed at a school on the 45<sup>th</sup> day of the school year and on the last day of the survey administration period, with no break in employment are included in the calculation that school's indicators.
- For the purposes of the School Climate indicator, teachers are defined as professional certified staff (PCS) eligible to receive teacher supply monies per the most current code list posted at <https://ed.sc.gov/finance/financial-services/pcs-information/>.
- Teachers with assignments at multiple schools shall be included in the calculation of  $SC^{sch}$ ,  $IF^T$ ,  $WC^T$ , and  $S^T$  only for the location designated as their home school.
- If a teacher does not have a designated home school, then their factor scores shall be included in the calculation of  $SC^{sch}$ ,  $IF^T$ ,  $WC^T$ , and  $S^T$  for the district and for the state.

## What Students are Included in the Indicator:

- All students who are enrolled in 3<sup>rd</sup> Grade or later at the same school on the 45<sup>th</sup> day of the school year and on the last day of the survey administration period, with no break in enrollment are included in the calculation of that school's indicators.
- Students who exit a school during the survey administration period are included in the indicator if they complete the survey.

## How Rating Points are Earned for the Indicator:

The teacher climate survey items used in the calculation of factor scores appear in Table 16.

**Table 16**

*Teacher Survey Items Used in the Calculation of Factors for the School Climate Indicator*

Item	Text of Item
Teacher Perceptions of Instructional Focus ( $IF^T$ )	
$IF_1^T$	My school provides challenging instructional programs for students.
$IF_2^T$	Teachers at my school effectively implement the State Curriculum Standards.
$IF_3^T$	Teachers at my school focus instruction on understanding, not just memorizing facts.
$IF_4^T$	Teachers at my school have high expectations for students' learning.
$IF_5^T$	There is a sufficient amount of classroom time allocated to instruction in essential skills.
$IF_6^T$	Student assessment information is effectively used by teachers to plan instruction.
$IF_7^T$	Effective instructional strategies are used to meet the needs of low achieving students.
$IF_8^T$	My school offers effective programs for students with disabilities.
$IF_9^T$	Instructional strategies are used to meet the needs of academically gifted students.

**Table 16 (cont.).**

Item	Text of Item
<b>Teacher Perceptions of Working Conditions (<math>WC^T</math>)</b>	
$WC_1^T$	The level of teacher and staff morale is high at my school.
$WC_2^T$	Teachers respect each other at my school.
$WC_3^T$	Teachers at my school are recognized and appreciated for good work.
$WC_4^T$	The school administration communicates clear instructional goals for the school.
$WC_5^T$	The school administration sets high standards for students.
$WC_6^T$	The school administration provides effective instructional leadership.
$WC_7^T$	Teacher evaluation at my school focuses on instructional improvement.
$WC_8^T$	School administrators visit classrooms to observe instruction.
$WC_9^T$	The school administration arranges for collaborative planning and decision making.
$WC_{10}^T$	I am satisfied with the learning environment in my school.
$WC_{11}^T$	Rules and consequences for behavior are clear to students.
$WC_{12}^T$	The rules for behavior are enforced at my school.
$WC_{13}^T$	I feel supported by administration at my school.
$WC_{14}^T$	The faculty and staff at my school have a shared vision.
$WC_{15}^T$	The school leadership makes a substantial effort to address teacher concerns.
$WC_{16}^T$	My decisions in areas such as instruction and student progress are supported.
$WC_{17}^T$	Teachers at my school are encouraged to develop innovative solutions to problems.
$WC_{18}^T$	I feel comfortable raising issues and concerns that are important to me.
$WC_{19}^T$	I am satisfied with my current working conditions.
<b>Teacher Perceptions of Safety (<math>S^T</math>)</b>	
$S_1^T$	I feel safe at my school before and after school hours.
$S_2^T$	I feel safe at my school during the school day.
$S_3^T$	I feel safe going to or coming from my school.

*Note:* No school factor score shall be reported that is derived from fewer than 10 teachers. Items shown in this table may or may not reflect the order with which they are presented to respondents when completing the school climate survey. All items are answered on a four-point Likert scale where 1 = Disagree, 2 = Somewhat Disagree, 3 = Somewhat Agree, and 4 = Agree. A fifth option, in which 5 = "Don't Know", shall be coded as missing data. Items associated with each factor are taken from Gareau, S., May, J., Mindrila, D., Ishikawa, T., DiStefano, C., Monrad, D.M., & Price, K. (2010, May). *The relationship between school climate and school performance*.

The student climate survey items used in the calculation of factor scores appear in Table 17.

**Table 17**  
*Student Survey Items Used in the Calculation of Factors for the School Climate Indicator*

Item	Text of Item
<b>Student Perceptions of Social Physical Environment (SPE<sup>S</sup>)<sup>a</sup></b>	
SPE <sub>1</sub> <sup>S</sup>	Students at my school believe they can do good work.
SPE <sub>2</sub> <sup>S</sup>	The grounds around my school are kept clean.
SPE <sub>3</sub> <sup>S</sup>	The hallways at my school are kept clean.
SPE <sub>4</sub> <sup>S</sup>	The bathrooms at my school are kept clean.
SPE <sub>5</sub> <sup>S</sup>	Broken things at my school get fixed.
SPE <sub>6</sub> <sup>S</sup>	Students at my school behave well in class.
SPE <sub>7</sub> <sup>S</sup>	Students at my school behave well in the hallways, in the lunchroom, and on school grounds.
SPE <sub>8</sub> <sup>S</sup>	Students from different backgrounds get along well at my school.
SPE <sub>9</sub> <sup>S</sup>	Teachers and students get along well with each other at my school.
SPE <sub>10</sub> <sup>S</sup>	I am satisfied with the social and physical environment at my school.
<b>Student Perceptions of Safety (S<sup>S</sup>)</b>	
S <sub>1</sub> <sup>S</sup>	I feel safe at my school before and after school hours.
S <sub>2</sub> <sup>S</sup>	I feel safe at my school during the school day.
S <sub>3</sub> <sup>S</sup>	I feel safe going to or coming from my school.

*Note:* No factor score shall be reported that is derived from fewer than 20 students. Items shown in this table may or may not reflect the order with which they are presented to respondents when completing the school climate survey. All items are answered on a four-point Likert scale where 1 = Disagree, 2 = Somewhat Disagree, 3 = Somewhat Agree, and 4 = Agree. A fifth option, in which 5 = “Don’t Know”, shall be coded as missing data. Items associated with each factor are taken from Gareau, S., May, J., Mindrila, D., Ishikawa, T., DiStefano, C., Monrad, D.M., & Price, K. (2010, May). *The relationship between school climate and school performance*.

<sup>a</sup> The SPE<sup>S</sup> factor score shall not be reported or used in calculating SC<sup>sch</sup> for online or virtual schools.

Calculate the number of Rating Points earned according to the following steps:

1. Calculate the school mean response for each item used in the calculation of a climate survey factor score. Mean responses calculated by school will be used for missing items for respondents missing ≤ 20% of the items used in calculating a given factor score.
2. Calculate IF<sup>T</sup> according to equation (8) and the subsequent sub-steps:

$$IF^T = \left( \sum_{i=1}^n \left( \sum_{k=1}^9 IF_k^T \right) / 9 \right) / n \quad (8)$$

*Note:* IF<sup>T</sup> = Teacher Perceptions of Instructional Focus at the current school. *i* = an index for an individual respondent (from 1 to *n*, the number of teachers included in the calculation of IF<sup>T</sup> for the school). *k* = an index for an individual survey item included in IF<sup>T</sup> (from 1 to 9). IF<sub>*k*</sub><sup>T</sup> = The response to item *k* for respondent *i* (on a scale from 1 to 4).

- 2.a. Exclude records that are missing responses for more than one of the items used in the calculation of  $IF^T$ .
- 2.b. If the number of teacher responses remaining with which to calculate  $IF^T$  is less than 10, then skip 2.c through 2.h and do not report  $IF^T$  for this school.
- 2.c. Enter the school mean found in step 1 for missing items in the remaining records (e.g., if a respondent did not answer item  $IF_4^T$ , enter the mean response to that item from other teachers at the same school).
- 2.d. For each individual respondent, divide the sum of item responses for this factor by 9 (the number of items in the factor) to find their individual factor score.
- 2.e. Divide the sum of individual factor scores at the school by the number of respondents with a factor score at that school.
- 2.f. Subtract 2.74 from the result of 2.e. If the difference is less than zero, set it to zero.
- 2.g. Multiply the result of 2.f by 8.04. If the product is greater than 10, set it to 10.
- 2.h. Round the final value of  $IF^T$  to the nearest hundredth (e.g., 7.21).
3. Calculate  $WC^T$  according to equation (9) and the subsequent sub-steps:

$$WC^T = \left( \sum_{i=1}^n \left( \sum_{k=1}^{19} WC_k^T \right) / 19 \right) / n \quad (9)$$

*Note:*  $WC^T$  = Teacher Perceptions of Working Conditions at the current school.  $i$  = an index for an individual respondent (from 1 to  $n$ , the number of teachers included in the calculation of  $WC^T$  for the school).  $k$  = an index for an individual survey item included in  $WC^T$  (from 1 to 19).  $WC_k^T$  = The response to item  $k$  for respondent  $i$  (on a scale from 1 to 4).

- 3.a. Exclude records that are missing responses for more than three of the items used in the calculation of  $WC^T$ .
- 3.b. If the number of teacher responses remaining with which to calculate  $WC^T$  is less than 10, then skip 3.c through 3.h and do not report  $WC^T$  for this school.
- 3.c. Enter the school mean found in step 1 for missing items in the remaining records (e.g., if a respondent did not answer item  $WC_1^T$ , enter the mean response to that item from other teachers at the same school).
- 3.d. For each individual respondent, divide the sum of item responses for this factor by 19 (the number of items in the factor) to find their individual factor score.
- 3.e. Divide the sum of individual factor scores at the school by the number of respondents with a factor score at that school.
- 3.f. Subtract 2.24 from the result of 3.e. If the difference is less than zero, set it to zero.
- 3.g. Multiply the result of 3.f by 5.72. If the product is greater than 10, set it to 10.
- 3.h. Round the final value of  $WC^T$  to the nearest hundredth (e.g., 7.21).
4. Calculate  $S^T$  according to equation (10) and the subsequent sub-steps:

$$S^T = \left( \sum_{i=1}^n \left( \sum_{k=1}^3 S_k^T \right) / 3 \right) / n \quad (10)$$

*Note:*  $S^T$  = Teacher Perceptions of Safety at the current school.  $i$  = an index for an individual respondent (from 1 to  $n$ , the number of teachers included in the calculation of  $S^T$  for the school).  $k$  = an index for an individual survey item included in  $S^T$  (from 1 to 3).  $S_k^T$  = The response to item  $k$  for respondent  $i$  (on a scale from 1 to 4).

- 4.a. Exclude records that are missing responses for any of the items used in the calculation of  $S^T$ .
- 4.b. If the number of teacher responses remaining with which to calculate  $S^T$  is less than 10, then skip 4.c through 4.g and do not report  $S^T$  for this school.
- 4.c. For each individual respondent, divide the sum of item responses for this factor by 3 (the number of items in the factor) to find their individual factor score.
- 4.d. Divide the sum of individual factor scores at the school by the number of respondents with a factor score at that school rounding to the nearest hundredth (e.g., 3.21).
- 4.e. Subtract 2.87 from the result of 4.d. If the difference is less than zero, set it to zero.
- 4.f. Multiply the result of 4.e by 8.84. If the product is greater than 10, set it to 10.
- 4.g. Round the final value of  $S^T$  to the nearest hundredth (e.g., 7.21).
5. Calculate  $SPE^S$  according to equation (11) and the subsequent sub-steps:

$$SPE^S = \left( \sum_{i=1}^n \left( \sum_{k=1}^{10} SPE_k^S \right) / 10 \right) / n \quad (11)$$

*Note:*  $SPE^S$  = Student Perceptions of Social Physical Environment at the current school.  $i$  = an index for an individual respondent (from 1 to  $n$ , the number of students included in the calculation of  $SPE^S$  for the school).  $k$  = an index for an individual survey item included in  $SPE^S$  (from 1 to 10).  $SPE_k^S$  = The response to item  $k$  for respondent  $i$  (on a scale from 1 to 4). The  $SPE^S$  factor score will not be used in calculating the School Climate Indicator for online and virtual schools.

- 5.a. Do not calculate or report  $SPE^S$  for online and virtual schools.
- 5.b. Exclude records that are missing responses for more than two of the items used in the calculation of  $SPE^S$ .
- 5.c. If the number of student responses remaining with which to calculate  $SPE^S$  is less than 20, then skip 5.d through 5.i and do not report  $SPE^S$  for this school.
- 5.d. Enter the school mean found in step 1 for missing items in the remaining records (e.g., if a respondent did not answer item  $SPE_5^S$ , enter the mean response to that item from other students at the same school).
- 5.e. For each individual respondent, divide the sum of item responses for this factor by 10 (the number of items in the factor) to find their individual factor score.
- 5.f. Divide the sum of individual factor scores at the school by the number of respondents with a factor score at that school rounding to the nearest hundredth (e.g., 2.98).
- 5.g. Subtract 2.28 from the result of 5.f. If the difference is less than zero, set it to zero.

- 5.h. Multiply the result of 5.g by 5.84. If the product is greater than 10, set it to 10.
- 5.i. Round the final value of  $SPE^S$  to the nearest hundredth (e.g., 7.21).
6. Calculate  $S^S$  according to equation (12) and the subsequent sub-steps:

$$S^S = \left( \sum_{i=1}^n \left( \sum_{k=1}^3 S_k^S \right) / 3 \right) / n \quad (12)$$

*Note:*  $S^S$  = Student Perceptions of Safety at the current school.  $i$  = an index for an individual respondent (from 1 to  $n$ , the number of students included in the calculation of  $S^S$  for the school).  $k$  = an index for an individual survey item included in  $S^S$  (from 1 to 3).  $S_k^S$  = The response to item  $k$  for respondent  $i$  (on a scale from 1 to 4).

- 6.a. Exclude records that are missing responses for any of the items used in the calculation of  $S^S$ .
- 6.b. If the number of student responses remaining with which to calculate  $S^S$  is less than 20, then skip 6.c through 6.g and do not report  $S^S$  for this school.
- 6.c. For each individual respondent, divide the sum of item responses for this factor by 3 (the number of items in the factor) to find their individual factor score.
- 6.d. Divide the sum of individual factor scores at the school by the number of respondents with a factor score at that school, rounding to the nearest hundredth (e.g., 3.06).
- 6.e. Subtract 2.36 from the result of 6.d. If the difference is less than zero, set it to zero.
- 6.f. Multiply the result of 6.e by 6.09. If the product is greater than 10, set it to 10.
- 6.g. Round the final value of  $S^S$  to the nearest hundredth (e.g., 7.21).
7. Calculate the teacher participation rate ( $PR^T$ ) for the school as the proportion of the teachers included in the indicator who submitted responses to the School Climate survey (expressed as a decimal), regardless of whether those responses were complete enough to be used in the calculation of factor scores.
- ~~8. Calculate the student participation rate ( $PR^S$ ) for the school as the proportion of the students included in the indicator who submitted responses to the School Climate survey (expressed as a decimal), regardless of whether those responses were complete enough to be used in the calculation of factor scores.~~
9. For ~~schools with participation rates of at least 80% for both groups of respondents (i.e., both  $PR^T \geq .80$  and  $PR^S \geq .80$ )~~ all schools, calculate  $SC^{sch}$  according to equation (13) and the subsequent sub-steps:

$$SC^{sch} = (IF^T + WC^T + S^T + SPE^S + S^S) / k \quad (13)$$

*Note:*  $SC^{sch}$  = perceptions of School Climate at the current school.  $IF^T$  = Teacher Perceptions of Instructional Focus at the current school.  $WC^T$  = Teacher Perceptions of Working Conditions at the current school.  $S^T$  = Teacher Perceptions of Safety at the current school.  $SPE^S$  = Student Perceptions of Social Physical Environment at the current school.  $S^S$  = Student Perceptions of Safety at the current school.  $k$  = the number of factor scores used in the calculation of  $SC^{sch}$  for this school. The  $SPE^S$  factor score is not used in calculating  $SC^{sch}$  for online and virtual schools. If a school has  $\geq 80\%$  participation rate for a respondent group but still has one or more factor scores that are not reported for having too few complete responses, exclude those factor scores from the calculation of  $SC^{sch}$ .

- 9.a. Find the sum of all School Climate factor scores for the school (found in step 2 through step 6).

- 9.b. If one or more of the factor scores has not been reported because there were too few complete responses even though the response rate for the subgroup  $\geq 80\%$ , then exclude that factor score from the calculation of  $SC^{sch}$ .
- 9.c. Divide the sum of factor scores for the school by the number of factor scores used in the calculation of  $SC^{sch}$  for the current school.

10. For schools with participation rates below 80% (i.e., either  $PR^T < .80$  or  $PR^S < .80$ ), calculate  $SC^{sch}$  according to equation (14) and the subsequent sub-steps:

$$SC^{sch} = \left( \frac{(IF^T + WC^T + S^T + SPE^S + S^S)}{5} \right) \times \left( \frac{(PR_*^T + PR_*^S)}{1.6} \right) \quad (14)$$

**Note:**  $SC^{sch}$  = perceptions of School Climate at the current school.  $IF^T$  = Teacher Perceptions of Instructional Focus at the current school.  $WC^T$  = Teacher Perceptions of Working Conditions at the current school.  $S^T$  = Teacher Perceptions of Safety at the current school.  $SPE^S$  = Student Perceptions of Social Physical Environment at the current school.  $S^S$  = Student Perceptions of Safety at the current school.  $PR_*^T$  = either the survey participation rate at the school among teachers or 0.80, whichever is less.  $PR_*^S$  = either the survey participation rate at the school among students or 0.80, whichever is less. Since the  $SPE^S$  factor score is not used in calculating  $SC^{sch}$  for online and virtual schools, exclude this term from equation (14) for these schools and divide the sum of other factor scores by 4 instead of 5. If a school has one or more factor scores that are not reported for having too few complete responses and has  $< 80\%$  participation rate for that respondent group, a zero shall be used in place of the missing factor score for the calculation of  $SC^{sch}$ .

10.a. Find the sum of all School Climate factor scores for the school (found in step 2 through step 6).

10.b. If one or more of the factor scores has not been reported because there were too few complete responses even though the response rate for the subgroup  $\geq 80\%$ , then exclude that factor score from the calculation of  $SC^{sch}$ .

10.c. If one or more of the factor scores has not been reported because there were too few complete responses and the response rate for that subgroup  $< 80\%$ , then a value of zero shall be used in its place.

10.d. Divide the sum of factor scores for the school by 5 (or by 4, in the case of online and virtual schools for which  $SPE^S$  is not calculated).

10.e. If the survey participation rate of only one group is less than 80%, then set the survey participation rate of the other group to 80% for the calculation of  $SC^{sch}$  (e.g., if  $PR^T = .84$  and  $PR^S = .78$  then  $PR_*^T = .80$  and  $PR_*^S = .78$ ).

10.f. Divide the sum of the participation rates used in 10.e (i.e.,  $PR_*^T + PR_*^S$ ) by 1.6 (note that this is mathematically equivalent to dividing the mean of these values by the minimum acceptable participation rate of 80%).

10.g. Multiply the quotient found in step 10.d by the quotient found in step 10.f and round to the nearest hundredth (e.g., 6.65).

11. The number of Rating Points is equal to the value of  $SC^{sch}$  (as calculated in either step 9 or in step 10, depending upon the school's participation rates).



12. Finally, total Rating Points earned are converted to Ratings using Table 18.

**Table 18**

*School Climate Rating Point Conversions to Ratings by School Type*

Rating	Elementary Schools	Middle Schools	High Schools
Excellent	8.21 – 10.00	7.43 – 10.00	7.51 – 10.00
Good	7.64 – 8.20	6.63 – 7.42	6.79 – 7.50
Average	6.71 – 7.63	5.45 – 6.62	5.58 – 6.78
Below Average	5.72 – 6.70	4.38 – 5.44	4.63 – 5.57
Unsatisfactory	0.00 – 5.71	0.00 – 4.37	0.00 – 4.62

## Section IV: NON-INDICATOR INFORMATION

All Report Cards, whether for schools, districts, or the state, provide additional information to community stakeholders that is not used in the calculation of indicators or ratings.

### General Information

The top page or landing area of each Report Card shall contain the following general information for easy reference by stakeholders.

**Directory Information:** The General Information area shall contain the address and phone number of the school (or of district offices), the school identification number (SIDN) for the school or district, the current leadership (the principal of the school or the district superintendent and board chair, as applicable), and a link to the school or district website.

**Total Membership:** Report the total student enrollment and the total number of teachers at the school, district, or state for the school year reported.

**Report Card Narrative:** District superintendents, school principals, and School Improvement Councils are asked to focus on the World Class Skills of the *Profile of the South Carolina Graduate* and respond to the following prompt:

**Our district / school is helping all students develop the World Class Skills  
of the Profile of the South Carolina Graduate by. . .**

For example, districts and schools may want to focus on the four Cs: critical thinking, communication, collaboration, and creativity. To make this even more targeted, a district or school may choose at least two of the four Cs and explain briefly what your district/school has done in school year 2020-21 to increase student readiness and provide data to show whether your efforts are having an impact. The following framework developed by Partnerships for 21<sup>st</sup> Century Skills may be of assistance: <http://www.battelleforkids.org/networks/p21>.

### Intervention Identification

The accountability system identifies schools for intervention based two sets of criteria: the schoolwide performance, or the performance of individual subgroups of students. The Every Student Succeeds Act (ESSA) mandates identification specific to low-performing Title 1 schools and achievement gaps in all schools. Those schoolwide identifications are incorporated within the state identification system.

**Schoolwide performance identification:** Schools in South Carolina receive Ratings in one or more accountability clusters.

**Primary School grouping:** Highest grade level is third. Identification is based on partner elementary school

**Elementary School cluster:** Schools rated within this cluster will receive a Rating based on grades 3-5 or if the highest grade level in the school is grade 6, then the Rating will be based on grades 3-6.

**Middle School cluster:** Schools rated in this cluster will have two or more grade levels in the 6-8 grade span.

**High School cluster:** Schools rated in this cluster schools including a 12<sup>th</sup> grade or are partnered with a school containing a 12<sup>th</sup> grade.

**Priority Schools:** This school-wide performance intervention indicator is based on the performance of the school within the accountability cluster. All schools performing at or below the 10<sup>th</sup> percentile within the cluster are identified as Priority schools. In addition, any high school with a graduation rate below 70% is a Priority school.

Title I Schools performing at or below the 5<sup>th</sup> percentile within all Title I schools in the cluster are eligible for the **Comprehensive Support and Improvement (CSI) designation**. Any high school with a graduation rate below 70% is eligible for CSI designation.

Subgroup Performance based Identification applies to all schools

**Priority Performance Benchmarks:** The percentages associated with the all-students subgroup on the individual measures from the school with the highest summative accountability score in the bottom 10% of schools.

**Comprehensive Support Benchmark:** The overall index score from the all-students subgroup (excluding ELP) of the highest scoring CSI school determines the benchmark for comparison to determine low performing subgroups across all schools in that report card type across public schools in the state.

**Additional Targeted Support and Intervention (ATSI):** Any public school which contains an accountability subgroup performing below the Comprehensive Support and Improvement Performance low performance benchmark is identified as ATSI and that subgroup is identified as low performing. In other words, the subgroup's performance is equivalent to or less than the performance of the all student group in the top performing CSI school for that school type (elementary, middle, high).

**Under-performing Subgroup:** A subgroup is considered to be under performing if the scores from that subgroups are lower than the Priority Performance Benchmarks. In other words, the subgroup's performance is equivalent to or less than the performance of the all student group in the top performing Priority school for that school type (elementary, middle, high).

Exit criteria for schools receiving intervention varies by school.

*For questions or additional information contact the SCDE Office of School Transformation at 803-734-5849.*

## Section V: DISTRICT AND STATE REPORT CARDS

Neither School Districts nor the State receives summative Ratings or Ratings on individual indicators. The students reported in the data below have been continuously enrolled between the 45<sup>th</sup> and 160<sup>th</sup> days in the school district, or within the state, but not necessarily at the same school, including students in Group homes and Residential Treatment Facilities (RTF).

**Academic Achievement:** For each ELA and Mathematics academic achievement test reported on a school report card (i.e., SC READY, SC ALT, and EOCEP tests in **English 1** and Algebra 1) administered to all students continuously enrolled in the school district or state (including Residential Treatment Facilities and Group homes), the proportion of students who meet or exceed expectations and the proportion of students who score at each separate achievement level (including the proportion of students not tested) shall be reported both in aggregate as well as disaggregated for students from major racial and ethnic groups, economically disadvantaged students (as compared to students who are not economically disadvantaged), children with disabilities (as compared to children without disabilities), English learners (ELs), students by gender, migrant students, students identified as homeless, students in foster care, and students with a parent or guardian who is a member of the Armed Forces (as defined in section 101(a)(4) of Title 10, United States Code).

**Preparing for Success:** For each Science and Social Studies academic achievement test reported on a school report card (i.e., SCPASS, SC ALT, and EOCEP tests in Biology 1; note that the EOCEP test in US History and the Constitution has been excluded from accountability for the 2021-22 school year) administered to all students continuously enrolled in the school district or state (including Residential Treatment Facilities and Group homes), the proportion of students who meet or exceed expectations and the proportion of students who score at each separate achievement level (including the proportion of students not tested) shall be reported both in aggregate as well as disaggregated for students from major racial and ethnic groups, economically disadvantaged students (as compared to students who are not economically disadvantaged), children with disabilities (as compared to children without disabilities), English learners (ELs), students by gender, migrant students, students identified as homeless, students in foster care, and students with a parent or guardian who is a member of the Armed Forces (as defined in section 101(a)(4) of Title 10, United States Code).

**English Learners' Progress:** The English Learners' Progress indicator for the district (or state) shall report the proportion of ELs within the district (or state) who have met or exceeded their current annual interim target to achieve English language proficiency within five years of beginning the EL program, regardless of whether the EL has been reported at the school level.

**Graduation Rate:** The Graduation Rate reports the proportion of students in the 4-year graduation cohort base file for the district or the state (as described in the "[INDICATOR: Graduation Rate](#)" section of this manual) who graduate from high school within four full years of their initial enrollment unless the student meets one of the approved reasons for removal from the cohort (documentation of transfer to another diploma-granting high school, emigration to another

country, transfer to prison or juvenile facility following adjudication, or death). The Graduation Rate shall be reported both in aggregate as well as disaggregated for students from major racial and ethnic groups, economically disadvantaged students (as compared to students who are not economically disadvantaged), children with disabilities (as compared to children without disabilities), English learners (ELs), students identified as homeless, and students in foster care.

**College & Career Readiness:** The College & Career Readiness area reports the proportion of students in the 4-year graduation cohort base file for the district or the state (as described in the [“INDICATOR: College/Career Readiness”](#) section of this manual) who satisfy one or more of the college ready or career ready criteria (as described in the [“INDICATOR: Graduation Rate”](#) section of this manual).

**Nation's Report Card (NAEP):** The National Assessment of Educational Progress (NAEP) is designed to measure what students across the nation know and can do in ten subject areas, including mathematics, reading, science, writing, the arts, civics, economics, geography, and U.S. history. The main NAEP tests selected samples of the student population in grades 4, 8 and 12. Long-term trend assessments are given to samples of students ages 9, 13, and 17. Although also reported on district report cards, NAEP results are reported for the state and are not considered a district measure.

**State Goals:** Federal law requires that each report card include the state's long-term goals and measurements of interim progress for all students and defined subgroups of students within the district or the state. This section reports the long-term goals and performance of all students, while information on subgroup performance shall be made available in the "Download Data" section of the main report card page.

**School Improvement:** Includes a list of schools within the district or state identified for Comprehensive Support and Improvement (CSI) as well as those identified for Additional Targeted Support and Improvement (ATSI). CSI schools are Title I schools performing at or below the 5th percentile of all Title I schools in the state and any high school with a graduation rate below 70%. ATSI schools are any school with one or more subgroup of students performing at or below the 5th percentile of the highest performing Comprehensive Support and Improvement (CSI) school in the state.

**School Climate:** The value of the School Climate indicator ( $SC^{sch}$ ), of the Teacher Perceptions of Instructional Focus factor ( $IF^T$ ), the Teacher Perceptions of Working Conditions factor ( $WC^T$ ), the Teacher Perceptions of Safety factor ( $S^T$ ), the Student Perceptions of Social-Physical Environment factor ( $SPE^S$ ), and the Student Perceptions of Safety factor ( $S^S$ ) reported for the district (or for the state) shall be calculated in the same manner as it is for schools but shall be based upon the factor scores of all students and teachers in the district (or state). School-level School Climate metrics that are based on at least ten respondents shall be included in the calculation of the corresponding district and state means even if those metrics are not reported at the school level. District School Climate metrics shall be reported separately by school type (i.e., separately for Elementary, Middle, and High Schools) both in aggregate as well as disaggregated for students from major racial and ethnic groups, economically disadvantaged students (as

compared to students who are not economically disadvantaged), children with disabilities (as compared to children without disabilities), and ELs.

**Classroom Environment:** This indicator shows data collected about teachers and classrooms in the district or state.

**Student Safety:** Safety data collected from schools aggregated at the district or state level.

**Financial Data:** These measures are derived from audited prior year financial information. This indicator shows financial information for schools and districts including how funds are expended.

## Section VI: PALMETTO GOLD AND SILVER

Pursuant to Section 59-18-1100 of the South Carolina Code of Laws, the State Board of Education, working with the Education Oversight Committee (EOC), must establish the Palmetto Gold and Silver Awards Program. The goal is “to recognize and reward schools for academic achievement and for closing the achievement gap.”

The State Board of Education, working with the division and the Department of Education, must establish the Palmetto Gold and Silver Awards Program to recognize and reward schools for academic achievement and for closing the achievement gap. Awards will be established for schools attaining high levels of absolute performance, for schools attaining high rates of growth, and for schools making substantial progress in closing the achievement gap between disaggregated groups. The award program must base improved performance on longitudinally matched student data and may include such additional criteria as:

- (1) student attendance;
- (2) teacher attendance;
- (3) graduation rates; and
- (4) other factors promoting or maintaining high levels of achievement and performance.

Schools shall be rewarded according to specific criteria established by the division. In defining eligibility for a reward for high levels of performance, student performance should exceed expected levels of improvement. The State Board of Education shall promulgate regulations to ensure districts of the State utilize these funds to improve or maintain exceptional performance according to their school's plans established in Section 59-139-10. Funds may be utilized for professional development support.

Special schools for the academically talented are not eligible to receive an award pursuant to the provisions of this section unless they have demonstrated improvement and high absolute achievement for three years immediately preceding. (*Section 59-18-1100*)

To summarize, the law requires awards be established for schools:

1. Attaining high levels of academic achievement;
2. Attaining high rates of growth; and
3. Making substantial progress in closing the achievement gap between disaggregated groups.

On May 14, 2019 the State Board of Education approved the following criteria for the Palmetto Gold and Silver Awards Program. The criteria, which identify the general performance of schools, were based upon an analysis of the 2018 annual school report cards and upon feedback from a task force of high school principals, coordinated by the EOC between January and April of 2019. It should be noted that the criteria will be amended in the future to recognize schools that have closed the achievement gap.

## School Level: Elementary & Middle

The criteria focus on two indicators: **Academic Achievement** and **Student Progress**, which are similar to the criteria used in 2014.

To be eligible to receive a Palmetto Gold or Silver designation, an elementary or middle school must not be designated as a Comprehensive Support and Improvement (CSI) school or an Additional Targeted Support and Improvement (ATSI) school **and** must receive a rating for the indicators of Academic Achievement and Student Progress as defined below:

### Palmetto Gold:

- 1) Excellent Academic Achievement and Excellent Student Progress, or
- 2) Excellent Academic Achievement and Good Student Progress, or
- 3) Good Academic Achievement and Excellent Student Progress.

### Palmetto Silver:

- 1) Average Academic Achievement and Excellent Student Progress, or
- 2) Good Academic Achievement and Good Student Progress, or
- 3) Excellent Academic Achievement and Average Student Progress.

## School Level: High

The accountability system does not measure student growth or academic progress at the high school level. Therefore, to reward schools for general performance, the Palmetto Gold and Silver Awards Program will focus on the following four indicators: **Academic Achievement, Preparing for Success, Graduation Rate, and College & Career Readiness**.

To be eligible to receive a Palmetto Gold or Silver designation, a high school must not be designated as a Comprehensive Support and Improvement (CSI) school or an Additional Targeted Support and Improvement (ATSI) school **and** must meet the following criteria:

**Palmetto Gold:** High schools that have an Excellent rating on 3 out of the 4 indicators and a minimum of Good on the fourth indicator would be eligible for the Palmetto Gold Award. A high school must also have an overall report card rating of Excellent or Good to earn a Palmetto Gold.

**Palmetto Silver:** High schools that have a minimum rating of Good on 3 out of the 4 indicators and no rating lower than Average on the fourth indicator would be eligible for a Palmetto Silver Award. A high school must also have an overall report card rating of Average or above to meet the criteria.



## **Section VII: ADDITIONAL INFORMATION**

### **Ratings Impact**

The South Carolina Department of Education (SCDE) conducts procedures to ensure that student performance on the state testing program assessments is measured properly and that accurate data are collected. Data used to rate schools undergo routine screening before and after the release of accountability Ratings. The Education Oversight Committee bears responsibility for the annual review to determine the utilization of the Report Card and the impact of the accountability system on student, school, and district performance.

### **Serious Data Problems**

If data problems of sufficient magnitude to question the validity of any accountability Rating are uncovered, then the SCDE should take one or more of the following steps after consulting with the district:

- Attempts will be made to rectify the data problems within the accountability calendar.
- If the problem cannot be resolved by the Rating release date, then
  - a delayed Rating may be issued; *or*
  - if the problem pertains to assessment data, Ratings may be determined using assessment results for "all students tested."

### **Who to Contact with Questions**

#### **Data collections:**

Matthew R. Lavery, EOC, 803-734-8827, [mlavery@eoc.sc.gov](mailto:mlavery@eoc.sc.gov)  
SCDE Office of Research and Data Analysis, 803-734-8086

#### **Data definitions:**

Matthew R. Lavery, EOC, 803-734-8827, [mlavery@eoc.sc.gov](mailto:mlavery@eoc.sc.gov)  
SCDE Office of Research and Data Analysis, 803-734-8086

#### **Financial Information:**

SCDE Office of Finance, 803-734-8108

#### **Rating methodologies:**

Matthew R. Lavery, EOC, 803-734-8827, [mlavery@eoc.sc.gov](mailto:mlavery@eoc.sc.gov)  
SCDE Office of Research and Data Analysis, 803-734-8086

**Report Card publication:**

Dana Yow, EOC, 803-734-6148, [danay@eoc.sc.gov](mailto:danay@eoc.sc.gov)  
SCDE Office of Research and Data Analysis, 803-734-8086

**School Safety Data:**

SCDE Office of Research and Data Analysis, 803-734-8086

**State Assessments:**

SCDE Office of Assessment, 803-734-8295

**General concerns:**

Matthew R. Lavery, EOC, 803-734-8827, [mlavery@eoc.sc.gov](mailto:mlavery@eoc.sc.gov)  
SCDE Office of Research and Data Analysis, 803-734-8086

**Intervention Identification:**

SCDE Office of School Transformation, 803-734-5849

# APPENDIX: Definitions for Data Published on Report Cards

## ACADEMICS



### Academic Achievement

#### Performance in ELA and Mathematics

##### DEFINITION:

###### *General:*

This indicator converts student test scores in ELA and Math to create the score for the Academic Achievement indicator for a school.

###### *Formula*

Detailed steps given in the [INDICATOR: Academic Achievement](#) section.

##### PROCEDURES:

###### *Collected by:*

State Department of Education, Office of Research and Data Analysis

###### *Reported by:*

District Student Information System (demographics).

Assessment files. Includes Assessment Reporting System and vendor files.

###### *Timeframe:*

End of school year

##### REPORTING & USE:

Reported on School Cards: Yes

Reported on District Cards: Yes

Reported on State Card: Yes

Included in Accountability Measure: Yes

#### Prime Instructional Time

##### DEFINITION:

###### *General*

This indicator provides information on the percentage of instructional time available when *both* teachers *and* students are present.

### Formula

(1) Calculate teacher attendance rate for Prime Instructional Time calculation (TAPRIME):

- $TAPRIME = 100 * ((TOTDAYS * (180/190)) - TCHABS) / (TOTDAYS * (180/190))$ , where
  - TOTDAYS = total days of employment and
  - TCHABS = (days of long-term absences + days of short-term absences + days of absence due to special circumstances + days of absence due to professional development on days students attend school) – NOSCHOOL, where
    - NOSCHOOL = days of absence on days of employment that are not days students are expected to attend school

(2) Calculate prime instructional time (PRIME):

- $PRIME = (STUATTEND + TAPRIME) - 100$ , where
  - STUATTEND = student attendance rate expressed as a percentage, which reflects the number of days students missed more than 50 percent of the instructional time.

### PROCEDURES:

#### *Collected by:*

State Department of Education, Office of Research and Data Analysis

#### *Reported by:*

School districts, Teacher Attendance Survey

#### *Timeframe:*

End of school year

### REPORTING & USE:

Reported on School Cards: Yes

Reported on District Cards: Yes

Reported on State Card: Yes

Included in Accountability Measure: No

*Note: Student Average Daily Attendance Rate is still collected and used in the calculation of this indicator; however, it is not reported separately since the USDE requires the collection and reporting of a student rate of chronic absenteeism.*



## Preparing for Success

### Performance in Science

#### DEFINITION:

##### *General:*

This indicator converts student test scores in Science to create the score for the Preparing for Success indicator for a school.

##### *Formula*

Detailed steps given in the [INDICATOR: Preparing for Success](#) section.

#### PROCEDURES:

##### *Collected by:*

State Department of Education, Office of Research and Data Analysis

##### *Reported by:*

District Student Information System (demographics).

Assessment files. Includes Assessment Reporting System and vendor files.

##### *Timeframe:*

End of school year

#### REPORTING & USE:

Reported on School Cards: Yes

Reported on District Cards: Yes

Reported on State Card: Yes

Included in Accountability Measure: Yes

### Performance on US History and the Constitution

#### DEFINITION:

##### *General:*

Reports the percentage of students who meet or exceed expectations (i.e., scored an A, B, or C on an EOCEP test or at the Meets or Exceeds level on the corresponding SC ALT assessment) as well as the percentage of students who score at each separate achievement level (whether that achievement level was demonstrated via an EOCEP test or the corresponding SC ALT assessment).

*Note: Due to delays caused by the transition to a new version of the exam necessitated by the approval and adoption of the 2019 South Carolina Social Studies College- and Career-Ready Standards, EOCEP scores in US History and the Constitution, and the corresponding SC ALT assessment in Social Studies, have been excluded from the Preparing for Success indicator for High Schools for the 2021-22 school year. The percentage of students who meet or exceed expectations will still be reported on report cards but shall not be used to calculate Rating Points or Ratings.*

##### *Formula*

- (1) Determine the number of students eligible to take the US History and the Constitution exam during the 2021-22 School Year.
- (2) Determine the number of students who are excluded from the indicator using the same exclusion criteria described in the [What Students are Included in the Indicator](#) section of the High School Preparing for Success indicator.

- (3) Subtract the number found in (2) from the number found in (1) to find the number of students included in the indicator.
- (4) Find the number of students who met or exceeded expectations (i.e., scored an A, B, or C on an EOCEP test or at the Meets or Exceeds level on the corresponding SC ALT assessment).
- (5) Report the percentage of students who meet or exceed expectations by dividing the number found in step (4) by the number found in step (3).
- (6) Report the percentage of students who score at each separate achievement level (as indicated in Table 9 of the [How Rating Points are Earned for the Indicator](#) section of the High School Preparing for Success indicator) by dividing the number of students who score at each separate achievement level by the number found in step (3).

#### PROCEDURES:

##### *Collected by:*

State Department of Education, Office of Research and Data Analysis

##### *Reported by:*

District Student Information System (demographics).

Assessment files. Includes Assessment Reporting System and vendor files.

##### *Timeframe:*

End of school year

#### REPORTING & USE:

Reported on School Cards: Yes (High Schools only)

Reported on District Cards: Yes

Reported on State Card: Yes

Included in Accountability Measure: No

## Kindergarten Readiness Rate

#### DEFINITION:

##### *General*

This indicator reports the percentage of students entering Kindergarten who are ready to enter based on the four domains of readiness on the Kindergarten Readiness Assessment (KRA): Social Foundations, Language/Literacy, Mathematics, and Physical Well-Being.

At the school level, the following will be reported out:

- Percentage of students Demonstrating Readiness on the KRA
- Percentage of students Approaching Readiness on the KRA
- Percentage of students Emerging Readiness on the KRA

#### PROCEDURES:

##### *Collected and Reported by:*

State Department of Education, Office of Research and Data Analysis

##### *Timeframe:*

After 90<sup>th</sup> day. Assessment must be administered in first 45 days of school.

#### REPORTING & USE:

Reported on School Cards: Yes (Elementary and Primary Cards only)

Reported on District Cards: Yes

Reported on State Card: Yes

Included in Accountability Measure: No

## 1st Grade Students on-track for 2nd Grade Success

### DEFINITION:

#### *General*

This indicator reports the percentages of 1<sup>st</sup> graders who are on track for grade level success in English Language Arts and Mathematics in 2<sup>nd</sup> grade. School districts can choose the method by which they determine student success and will report these data via two separate questions on the Summer Survey. School districts have been provided guidance on this measure from the SCDE.

### PROCEDURES:

#### *Collected by:*

State Department of Education, Office of Research and Data Analysis

#### *Reported by:*

School Summer Survey

#### *Timeframe:*

End of school year

### REPORTING & USE:

Reported on School Cards: Yes (Elementary and Primary Cards only)

Reported on District Cards: Yes

Reported on State Card: Yes

Included in Accountability Measure: No

## 2nd Grade Students on-track for 3<sup>rd</sup> Grade Success

### DEFINITION:

#### *General*

This indicator reports the percentages of 2<sup>nd</sup> graders who are on track for grade level success in English Language Arts and Mathematics in 3<sup>rd</sup> grade. School districts can choose the method by which they determine student success and will report these data via two separate questions on the Summer Survey. School districts have been provided guidance on this measure from the SCDE.

### PROCEDURES:

#### *Collected by:*

State Department of Education, Office of Research and Data Analysis

#### *Reported by:*

School Summer Survey

#### *Timeframe:*

End of school year

### REPORTING & USE:

Reported on School Cards: Yes (Elementary and Primary Cards only)

Reported on District Cards: Yes

Reported on State Card: Yes

Included in Accountability Measure: No

## Percentage of Students Passing Civics Test

### DEFINITION:

#### *General*

This indicator reports the number of 9<sup>th</sup>, 10<sup>th</sup>, 11<sup>th</sup>, and 12<sup>th</sup> grade students enrolled in a U.S. Government Course who pass the Civics test.

## PROCEDURES:

### *Collected by:*

SC Department of Education, Office of Research and Data Analysis

### *Reported by:*

School Summer Survey

### *Timeframe:*

End of school year

## REPORTING & USE:

Reported on School Cards: Yes, High Schools

Reported on District Cards: Yes

Reported on State Card: Yes

Included in Accountability Measure: No





## English Learners' Progress

### English Learners' Progress Measure

#### DEFINITION:

*General:*

This indicator reports the percentage of students in a school who meet their individual target of becoming proficient in English to create the score for the English Learners' Progress indicator for a school.

*Formula*

Detailed steps given in the [INDICATOR: English Learners' Progress](#) section.

#### PROCEDURES:

*Collected by:*

SC Department of Education, Office of Research and Data Analysis

*Reported by:*

ACCESS results file.

*Timeframe:*

End of school year

#### REPORTING & USE:

Reported on School Cards: Yes

Reported on District Cards: Yes

Reported on State Card: Yes

Included in Accountability Measure: Yes



## Student Progress

### Index of Student Progress

#### DEFINITION:

##### *General:*

The academic progress in ELA and mathematics of students at the school is compared to other students in South Carolina who initially scored at similar levels to create the score for the Student Progress indicator for Elementary and Middle schools.

##### *Formula*

Detailed steps given in the [INDICATOR: Student Progress](#) section.

#### PROCEDURES:

##### *Collected by:*

State Department of Education, Office of Research and Data Analysis

##### *Reported by:*

District Student Information System (demographics).

Assessment files. Includes Assessment Reporting System and vendor files.

##### *Timeframe:*

End of school year

#### REPORTING & USE:

Reported on School Cards: Yes

Reported on District Cards: No

Reported on State Card: No

Included in Accountability Measure: Yes (Elementary and Middle Schools only)



## Graduation Rate

### Graduation Rate, On-time

#### DEFINITION:

##### *General*

The percentage of students who earn a standard high school diploma in four years or less (i.e., on time). Currently includes data from students who meet the state diploma requirements as a result of attending summer school following their fourth year.

- (1) Define the graduation cohort as those students who were first enrolled as a grade 9 student three years prior.
- (2) Allow for students to be removed from the cohort for the following reasons: student death, emigration, transfer to prison or juvenile facility following adjudication, and properly documented transfer.
- (3) Add to cohort students who transferred into the school
- (4) From the final cohort, identify students as graduates or non-graduates.
- (5) Divide the number of graduates from step (4) by the adjusted cohort obtained in step (3).

*Note: Refer to “What Students are Included in the Indicator” in the [INDICATOR: Graduation Rate](#) section for more detailed information about the students to include and exclude from the graduation cohort.*

##### *Formula*

Detailed steps given in the [INDICATOR: Graduation Rate](#) section.

#### PROCEDURES:

##### *Collected by:*

State Department of Education, Office of Research and Data Analysis

##### *Reported by:*

Schools identify students in cohort. Student Information System (SIS) data for four years is used to create the BASE file, which is provided to schools.

##### *Timeframe:*

4-year data collection completed in Summer.

#### REPORTING & USE:

Reported on School Cards: Yes (High Schools only)  
Reported on District Cards: Yes  
Reported on State Card: Yes  
Included in Accountability Measure: Yes (High Schools only)

### Dropout Rate

#### DEFINITION:

##### *General*

This measure provides information on the annual rate of students who leave the school or district for any reason, other than death, prior to graduation or completion of a course of studies without transferring to another school, district, or institution, divided by the total number of students enrolled at the school (grades seven through twelve; per SCDE guidelines).

### *Formula*

Calculated for each school/district with students in grades seven through twelve (calculated as an overall measure for all students in grades seven through twelve at the school/district).

- (1) Determine the number of students who dropped out of school during the previous school year (as per SCDE guidelines).
- (2) Add the number of students who failed to return after the summer.
- (3) Divide the sum of step one and step two by the total number of students enrolled on the last day of school during the previous school year.

*Note: Data will be two years behind.*

### PROCEDURES:

#### *Collected by:*

State Department of Education, Office of Student Intervention Services

#### *Reported by:*

Once approved by the State Board the final dropout reports are posted here: <https://ed.sc.gov/districts-schools/school-safety/discipline-related-reports/dropout-data/>

#### *Timeframe:*

Forty-fifth day of the following school year

### REPORTING & USE:

Reported on School Cards: Yes (High Schools only)

Reported on District Cards: Yes

Reported on State Card: Yes

Included in Accountability Measure: No

## Dropout Recovery Rate

### DEFINITION:

#### *General*

Dropout Recovery Rate reflects the proportion of students in grades 9 through 12 from each school and district who dropped out during a particular academic year and reenrolled in a public school or enrolled in an Adult Education high school diploma granting program within the first 135 days of the next academic year. To determine the dropout recovery rate, the number of reenrolled students – from both public schools and Adult Education programs – will be divided by the number of students in grades 9-12 reported as dropouts as of October 1.

#### *Formula*

Numerator: The number of students reported as dropouts in the prior year who re-enrolled in a public school in the current year or enrolled in an Adult Education high school diploma granting program in the current year

Denominator: The number of students in grades 9–12 reported as dropouts as of October 1 of the current school year (to reflect October 1 of the prior school year through September 30 of the current school year)

### PROCEDURES:

#### *Collected by:*

State Department of Education, Office of Student Intervention Services, Office of Research and Data Analysis, and Office of Adult Education

#### *Reported by:*

State Department of Education, Office of Student Intervention Services, Office of Research and Data Analysis, and Office of Adult Education

#### *Timeframe:*

135<sup>th</sup> day report

## REPORTING & USE:

Reported on School Cards: Yes (High Schools only)

Reported on District Cards: Yes

Reported on State Card: Yes

Included in Accountability Measure: No



## College & Career Readiness

### Number and Percentage of College-Ready Students

#### DEFINITION:

##### *General*

Reports the number and percentage of students who are identified as college-ready according to the criteria described in the [INDICATOR: College & Career Readiness](#) section of this manual

##### *Formula*

Divide the unduplicated count of college-ready students by the total number of students in the four-year graduation cohort (see [INDICATOR: Graduation Rate](#) for a detailed definition of the graduation cohort).

#### PROCEDURES:

##### *Collected by:*

State Department of Education, Office of Research and Data Analysis

##### *Reported by:*

District Student Information System, Assessment Reporting System, and vendor files

##### *Timeframe:*

End of school year

#### REPORTING & USE:

Reported on School Cards: Yes (High Schools only)

Reported on District Cards: Yes

Reported on State Card: Yes

Included in Accountability Measure: Yes (High Schools only; according to the details presented in the [INDICATOR: College & Career Readiness](#) section of this manual)

### Number and Percentage of Career-Ready Students

#### DEFINITION:

##### *General*

Reports the number and percentage of students who are identified as career-ready according to the criteria described in the [INDICATOR: College & Career Readiness](#) section of this manual

##### *Formula*

Divide the unduplicated count of career-ready students by the total number of students in the four-year graduation cohort (see [INDICATOR: Graduation Rate](#) for a detailed definition of the graduation cohort).

#### PROCEDURES:

##### *Collected by:*

State Department of Education, Office of Research and Data Analysis

##### *Reported by:*

Student Information System, Assessment Reporting System

##### *Timeframe:*

End of school year

## REPORTING & USE:

Reported on School Cards: Yes (High Schools only)

Reported on District Cards: Yes

Reported on State Card: Yes

Included in Accountability Measure: Yes (High Schools only; according to the details presented in the [INDICATOR: College & Career Readiness](#) section of this manual)

## Advanced Placement (AP) / International Baccalaureate (IB) / Cambridge International (CI) Participation Rate

### DEFINITION:

#### *General*

This indicator reports the participation rate as the unduplicated count of students (11<sup>th</sup> and 12<sup>th</sup> grade students) enrolled in CI, AP, or IB courses divided by the 135<sup>th</sup> day actively enrolled headcount, expressed as a percent.

#### *Formula*

Present this indicator as a ratio.

- (1) Determine the unduplicated number of students in grades 11 and 12 enrolled in Cambridge International (CI), Advanced Placement (AP), or International Baccalaureate (IB) classes at the school.
- (2) Divide the count in step one by the 135<sup>th</sup> day actively enrolled headcount for grades 11 and 12 and express as a percent.

### PROCEDURES:

#### *Collected by:*

State Department of Education, Office of Research and Data Analysis

#### *Reported by:*

Schools report AP and IB and CI student counts – School Summer Survey

#### *Timeframe:*

End of school year

## REPORTING & USE:

Reported on School Cards: Yes (High Schools only)

Reported on District Cards: Yes

Reported on State Card: Yes

Included in Accountability Measure: No

## Advanced Placement (AP) / International Baccalaureate (IB) / Cambridge International (CI) Success Rate

### DEFINITION:

#### *General*

This indicator reports the success rate in Advanced Placement (AP), International Baccalaureate (IB), or Cambridge International (CI) courses as the percentage of all AP, IB, and CI examinations (among all students in school) taken in which the scores were three or above on the AP tests, or four or above on the IB examinations. Also includes scores of C or higher in any Advanced Level (A) Cambridge International (CI) Exam or if the student earns a C or higher in an Advanced Subsidiary (AS) Level Cambridge International Exam in: Biology, Chemistry, Computer Science, Economics, English, Environmental Science/Management, History, Politics, Psychology, or foreign language (Chinese, French, German, Japanese, or Spanish).

#### *Formula*

Present this indicator as a percent.

- (1) Determine the count of AP or IB or CI tests at the school with scores of three or above on the AP tests, or four or above on the IB examinations or C or above on CI exams

- (2) Divide the count in step one above by the number of CI, AP, and IB tests taken and express the answer as a percentage.

#### PROCEDURES:

*Collected by:*

State Department of Education, Office of Research and Data Analysis

*Reported by:*

The College Board, International Baccalaureate Organization (IBO), and Cambridge International

*Timeframe:*

End of school year

#### REPORTING & USE:

Reported on School Cards: Yes (High Schools only)

Reported on District Cards: Yes

Reported on State Card: Yes

Included in Accountability Measure: Yes (High Schools only; according to the details presented in the [INDICATOR: College & Career Readiness](#) section of this manual)

## Career Clusters Available to High School Students

#### DEFINITION:

*General*

List of Career Clusters available to students in high schools. If students at that school have access to a Career Center offering a Career Cluster, that cluster can be included for the high school.

List of 15 Career Clusters:

- Agriculture, Food & Natural Resources Career Cluster
- Architecture & Construction Career Cluster
- Arts, A/V Technology & Communications Career Cluster
- Business Management & Administration Career Cluster
- Education & Training Career Cluster
- Finance Career Cluster
- Government and Public Administration
- Health Science Career Cluster
- Hospitality & Tourism Career Cluster
- Human Services/Family and Consumer Sciences Career Cluster
- Information Technology Career Cluster
- Law, Public Safety, Corrections & Security Career Cluster
- Manufacturing Career Cluster
- Marketing Career Cluster
- Science, Technology, Engineering & Mathematics Career Cluster
- Transportation, Distribution & Logistics Career Cluster

#### PROCEDURES:

*Collected and reported by:*

State Department of Education

*Reported by:*

School Summer Survey

*Timeframe:*

End of school year



## REPORTING & USE:

Reported on School Cards: Yes (High Schools only)  
Reported on District Cards: Yes  
Reported on State Card: Yes  
Included in Accountability Measure: No

## College Applications Completed

### DEFINITION:

#### *General*

This indicator reports the percentage of students in the graduation cohort who completed one or more college applications.

#### *Formula*

Present this indicator as the percentage of students from within the four-year graduation cohort (defined as those students who were first enrolled as grade 9 students three years prior) who have completed one or more college applications.

### PROCEDURES:

#### *Collected by:*

State Department of Education, Office of Research and Data Analysis

#### *Reported by:*

School Summer Survey

#### *Timeframe:*

End of school year

## REPORTING & USE:

Reported on School Cards: Yes (High Schools only)  
Reported on District Cards: Yes  
Reported on State Card: Yes  
Included in Accountability Measure: No

## College Enrollment

### DEFINITION:

#### *General*

This indicator reports the percentage of students from the prior year's graduation class who were enrolled in an in-state or out-of-state two- or four-year college in the Fall of the prior year.

#### *Formula*

Present this indicator as the percentage of students from the prior year's graduation class who were enrolled in an in-state or out-of-state two- or four-year college in the Fall of the prior year. Students enrolled in certificate programs are included in the current formula.

### PROCEDURES:

#### *Collected by:*

State Department of Education, College Freshman Report

#### *Reported by:*

Schools/Districts

#### *Timeframe:*

End of school year

## REPORTING & USE:

Reported on School Cards: Yes (High Schools only)  
Reported on District Cards: Yes  
Reported on State Card: Yes  
Included in Accountability Measure: No

## Dual Enrollment / Dual Credit, Number of Courses

### DEFINITION:

#### *General*

This indicator reports the total number of dual credit / dual enrollment courses taken (among all students) and completed in the school or district in the school year based on the 180<sup>th</sup> day count.

### PROCEDURES:

#### *Collected by:*

State Department of Education, Office of Research and Data Analysis

#### *Reported by:*

District Student Information System

## REPORTING & USE:

Reported on School Cards: Yes (High Schools only)  
Reported on District Cards: Yes  
Reported on State Card: Yes  
Included in Accountability Measure: No

## Dual Enrollment / Dual Credit, Number and Percentage of Students

### DEFINITION:

#### *General*

This measure provides the number of 11<sup>th</sup> and 12<sup>th</sup> grade students and percentage of 11<sup>th</sup> and 12<sup>th</sup> grade students enrolled in a dual credit / dual enrollment course in the school or district based on the 180<sup>th</sup> day count.

#### *Formula*

- (1) Find the total number of 11<sup>th</sup> and 12<sup>th</sup> grade students in a school
- (2) Find the number of students enrolled in one or more dual credit / dual enrollment classes among 11<sup>th</sup> and 12<sup>th</sup> grade students.
- (3) Divide (2) by (1) to obtain the percentage of students enrolled in a dual credit/dual enrollment course.

### PROCEDURES:

#### *Collected by:*

State Department of Education, Office of Research & Data Analysis

#### *Reported by:*

District Student Information System

## REPORTING & USE:

Reported on School Cards: Yes (High Schools only)  
Reported on District Cards: Yes  
Reported on State Card: Yes  
Included in Accountability Measure: Yes (High Schools only; according to the details presented in the [INDICATOR: College & Career Readiness](#) section of this manual)

## Enrollment in Career and Technology Courses at All High Schools

### DEFINITION:

#### *General*

The total number of students who are enrolled in career technology courses at the high school or district career center(s). Each course must meet a minimum of 250 minutes weekly.

#### *Formula*

Determine the total number of students who are enrolled in career technology courses of study at the high school or district career center on the 45<sup>th</sup> day of school.

### PROCEDURES:

#### *Collected by:*

Office of Career and Technology Education

#### *Reported by:*

District Student Information System

#### *Timeframe:*

January–March

### REPORTING & USE:

Reported on School Cards: Yes (High Schools only)

Reported on District Cards: Yes

Reported on State Card: Yes

Included in Accountability Measure: No

## FAFSA Completion

### DEFINITION:

#### *General*

The total number of seniors who are first-time FAFSA applicants in the current school, no older than 19, who also report they will be incoming first-year undergraduates the following year.

The total number of students as described above and percentage of graduating cohort who have completed a FAFSA form in the current school year. Data file is downloaded from [studentaid.ed.gov](http://studentaid.ed.gov) and includes completed FAAs among first-time filing applicants no older than 18 who will have received their high school diploma by the start of school year to which they are applying for aid.

#### *Formula*

Data, as aggregated by the federal Department of Education, is by school. This data provides a number of applications submitted and also those completed. For report card purposes, only completions are reported. This data is matched to the current master list of schools to eliminate schools listed that are not active/open and to match school names to school IDs for report card purposes

### PROCEDURES:

#### *Collected by:*

U.S. Department of Education

#### *Reported by:*

U.S. Department of Education

#### *Timeframe:*

August

## REPORTING & USE:

Reported on School Cards: Yes (High Schools only)  
Reported on District Cards: Yes  
Reported on State Card: Yes  
Included in Accountability Measure: No

## LIFE Scholarship

### DEFINITION:

#### *General*

This element reports the percentage of high school seniors meeting the eligibility requirements for the LIFE Scholarship.

#### *Formula*

Determine the number of high school seniors meeting the eligibility requirements for the LIFE scholarship promulgated by the SC Commission on Higher Education, divide by the four-year graduation cohort (defined as those students who were first enrolled as grade 9 students three years prior), and convert to a percentage. On Report Card, percentage of students meeting the eligibility for LIFE Scholarship will be reported.

### PROCEDURES:

#### *Collected by:*

State Department of Education, Office of Research and Data Analysis

#### *Reported by:*

School Summer Survey

#### *Timeframe:*

End of school year

## REPORTING & USE:

Reported on School Cards: Yes (High Schools only)  
Reported on District Cards: Yes  
Reported on State Card: Yes  
Included in Accountability Measure: No

## Palmetto Fellows Scholarship

### DEFINITION:

#### *General*

This element reports the percentage of high school seniors meeting the eligibility requirements for the Palmetto Fellows Scholarship.

#### *Formula*

Determine the number of high school seniors meeting the eligibility requirements for the Palmetto Fellows scholarship promulgated by the SC Commission on Higher Education, divide by the four-year graduation cohort (defined as those students who were first enrolled as grade 9 students three years prior). On Report Card, percentage of students meeting the eligibility for Palmetto Fellows will be reported.

### PROCEDURES:

#### *Collected by:*

State Department of Education, Office of Research and Data Analysis

#### *Reported by:*

School Summer Survey

#### *Timeframe:*

End of school year

## REPORTING & USE:

Reported on School Cards: Yes (High Schools only)  
Reported on District Cards: Yes  
Reported on State Card: Yes  
Included in Accountability Measure: No

## ACT Composite Score

### DEFINITION:

Average ACT Composite score of graduating seniors (as reported by ACT) by school, district, and state.

### PROCEDURES:

#### *Collected by:*

State Department of Education, Office of Research and Data Analysis

#### *Reported by:*

ACT

#### *Timeframe:*

June 15

## REPORTING & USE:

Reported on School Cards: Yes (High Schools only)  
Reported on District Cards: Yes  
Reported on State Card: Yes  
Included in Accountability Measure: No

## SAT Composite Score

### DEFINITION:

Average SAT Composite score of graduating seniors, as reported by the College Board, by school, district, and state.

### PROCEDURES:

#### *Collected by:*

State Department of Education, Office of Research and Data Analysis

#### *Reported by:*

College Board

#### *Timeframe:*

June 15

## REPORTING & USE:

Reported on School Cards: Yes (High Schools only)  
Reported on District Cards: Yes  
Reported on State Card: Yes  
Included in Accountability Measure: No

## Percentage of Students Scoring Silver or Higher on Career-Ready Credential

### DEFINITION:

Number and percentage of students earning a Silver, Gold, or Platinum National Career Readiness Certificate after taking WorkKeys and WIN exams.

#### *Formula*

Divide the number of students in the graduating cohort scoring Silver or higher on the National Career Readiness Certificate Exam by the total number of students in the graduating cohort. The graduating cohort includes students

who receive a high school diploma between June 16 of the previous school year and June 15 of the school year just completed.

#### PROCEDURES:

*Collected by:*

State Department of Education, Office of Research and Data Analysis

*Reported by:*

Assessment Reporting System

*Timeframe:*

End of school year

#### REPORTING & USE:

Reported on School Cards: Yes (High Schools only)

Reported on District Cards: Yes

Reported on State Card: Yes

Included in Accountability Measure: Yes (High Schools only; according to the details presented in the [INDICATOR: College & Career Readiness](#) section of this manual)

## Number and Percentage of Students Earning ASVAB Benchmark

#### DEFINITION:

Number and percentage of students earning a scale score of 31 or higher on ASVAB

*Formula*

Divide the number of students in the graduating cohort earning a score of 31 or higher on the ASVAB by the total number of students in the graduating cohort who receive a high school diploma by June 15. The graduating cohort includes students who receive a high school diploma between June 16 of the previous school year and June 15 of the school year just completed.

#### PROCEDURES:

*Collected by:*

State Department of Education

*Reported by:*

Assessment Reporting System

*Timeframe:*

End of school year

#### REPORTING & USE:

Reported on School Cards: Yes (High Schools only)

Reported on District Cards: Yes

Reported on State Card: Yes

Included in Accountability Measure: Yes (High Schools only; according to the details presented in the [INDICATOR: College & Career Readiness](#) section of this manual)

## Number and Percentage of Students Completing Work-Based Learning Experiences (State-approved)

#### DEFINITION:

*General*

The number and percentage of students successfully completing a state-approved work-based learning exit evaluation from an employer. The work-based learning program must include:

- Training agreement which defines a combination of objectives and a minimum of 40 practical experience hours or the highest number of hours required by industry defined competencies in a career pathway;

- Be aligned with state IGP career clusters;
- Include an industry evaluation that is created from the training agreement, which includes the world-class skills from the Profile of the South Carolina Graduate;
- The student must have earned a minimum of one unit in the pathway related to the work-based placement or completed a personal pathway of study.

*Formula*

- (1) Determine the total number of students enrolled in grades 9 through 12 who successfully complete a state-approved work-based learning exit evaluation.
- (2) Divide the total (step one) by the total number of students in the four-year graduation cohort (see [INDICATOR: Graduation Rate](#) for a detailed definition of the graduation cohort).

**PROCEDURES:**

*Collected by:*

State Department of Education, Office of Career and Technology Education

*Reported by:*

District Student Information System

*Timeframe:*

End of school year

**REPORTING & USE:**

Reported on School Cards: Yes (High Schools only)

Reported on District Cards: Yes

Reported on State Card: Yes

Included in Accountability Measure: Yes (High Schools only; according to the details presented in the [INDICATOR: College & Career Readiness](#) section of this manual)



## Nation's Report Card

### National Assessment of Educational Progress (NAEP) Performance

#### DEFINITION:

##### *General*

NAEP measures what U.S. students know and can do in various subjects across the nation, states, and in some urban districts. Also known as The Nation's Report Card, NAEP has provided important information about how students are performing academically since 1969.

NAEP is a congressionally mandated project administered by the National Center for Education Statistics (NCES) within the U.S. Department of Education and the Institute of Education Sciences (IES).

NAEP is given to a representative sample of students across the country. Results are reported for groups of students with similar characteristics (e.g., gender, race and ethnicity, school location, etc.) not individual students. National results are available for all subjects assessed by NAEP. State and selected urban district results are available for mathematics, reading, and (in some assessment years) science and writing.

##### *Formula*

Achievement level (Percent Below Basic, Basic, Proficient, and Advanced) of SC 4th and 8th graders by subgroup on the most recent reporting of NAEP for Reading and Mathematics. Data will be reported for SC and the nation.

#### PROCEDURES:

##### *Collected by:*

State Department of Education, Office of Assessment

##### *Reported by:*

National Center for Education Statistics (NCES)

##### *Timeframe:*

Varies

#### REPORTING & USE:

Reported on School Cards: No  
Reported on District Cards: Yes  
Reported on State Card: Yes  
Included in Accountability Measure: No





## State Goals

### State Goals

#### DEFINITION:

Federal law requires that each state report card include long-term goals and measurements of interim progress for all students and defined subgroups of students.

#### PROCEDURES:

*Collected by:*

State Department of Education

*Reported by:*

State Department of Education

*Timeframe:*

Varies

#### REPORTING & USE:

Reported on School Cards: Yes

Reported on District Cards: Yes

Reported on State Card: Yes

Included in Accountability Measure: No



## School Improvement

### Intervention Identification

#### DEFINITION:

A list of schools within the district or state identified for Comprehensive Support and Improvement (CSI) as well as those identified for Additional Targeted Support and Improvement (ATSI). CSI schools are Title I schools performing at or below the 5th percentile of all Title I schools in the state and any high school with a graduation rate below 70%. ATSI schools are any school with one or more subgroup of students performing at or below the 5th percentile of the highest performing Comprehensive Support and Improvement (CSI) school in the state.

#### PROCEDURES:

*Collected by:*

State Department of Education

*Reported by:*

State Department of Education

*Timeframe:*

Upon publication of Report Cards

#### REPORTING & USE:

Reported on School Cards: Yes (Support Status of current school shall be displayed; list of supported schools need not be provided)

Reported on District Cards: Yes

Reported on State Card: Yes

Included in Accountability Measure: No

# SCHOOL ENVIRONMENT



## School Climate

### School Climate Measure

#### DEFINITION:

##### *General:*

This indicator reports the perceptions of stakeholders as measured by factor scores that are based on select items from the School Climate survey (see the [INDICATOR: School Climate](#) section for more details).

##### *Formula*

Detailed steps given in the [INDICATOR: School Climate](#) section.

#### PROCEDURES:

##### *Collected by:*

SC Department of Education, Office of Research and Data Analysis

##### *Reported by:*

School Climate survey results.

##### *Timeframe:*

End of school year

#### REPORTING & USE:

Reported on School Cards: Yes  
Reported on District Cards: Yes  
Reported on State Card: Yes  
Included in Accountability Measure: Yes

### Chronic Absenteeism Rate

#### DEFINITION:

The number of students who were absent 10 percent or more school days during the school year in which they were enrolled. This is the definition of Chronic Absenteeism as reported per guidance from EDFacts, absenteeism is defined in accordance with the Office for Civil Rights' guidance, a student is absent if they are not physically on school grounds and are not participating in instruction or instruction-related activities at an approved off-grounds location for 50% or more of the school day. Chronically absent students include students who are absent for any reason (e.g., illness, suspension, the need to care for a family member), regardless of whether absences are excused or unexcused.

Prior year results required by the U.S. Department of Education are available in the Download Data section of the report cards.

#### PROCEDURES:

##### *Collected by:*

State Department of Education

##### *Reported by:*

School Districts, Student Information System

*Timeframe:*

Ongoing collection; pulled on 180th day

**REPORTING & USE:**

Reported on School Cards: Yes  
Reported on District Cards: Yes  
Reported on State Card: Yes  
Included in Accountability Measure: No

## **Gifted and Talented, Percentage of Students Served**

**DEFINITION:**

*General*

This reports the percentage of students who meet the state guidelines and received gifted and talented services provided by the state

*Formula*

- (1) Determine the number of students (grades three through ten) at the school, district, or state (as appropriate for the Report Card in question) who qualified and received gifted and talented services as per state-identification guidelines.
- (2) Divide the sum by the total number of students enrolled in grades three through ten at the school, district, or state (as appropriate for the Report Card in question).

**PROCEDURES:**

*Collected by:*

Office of Research and Data Analysis, Office of Finance

*Reported by:*

District Student Information System

*Timeframe:*

135<sup>th</sup> day Data Collection

**REPORTING & USE:**

Reported on School Cards: Yes  
Reported on District Cards: Yes  
Reported on State Card: Yes  
Included in Accountability Measure: No

## **Seventh and Eighth Grade Students Enrolled in High School Credit Courses**

**DEFINITION:**

*General*

This reports the percentage of seventh and eighth grade students that enroll in courses for high school credit (excludes keyboarding).

*Formula*

- (1) Determine the total number of students enrolled in grades seven and eight enrolled in courses for high school credit.
- (2) Divide the total by the number of seventh and eighth graders enrolled at the school.

**PROCEDURES:**

*Collected by:*

State Department of Education, Office of Research and Data Analysis

*Reported by:*

School Summer Survey

*Timeframe:*

End of School Year

#### REPORTING & USE:

Reported on School Cards: Yes (Middle Schools only)

Reported on District Cards: Yes

Reported on State Card: Yes

Included in Accountability Measure: No

## Student Retention

#### DEFINITION:

*General*

This indicator reports the percentage of students required to repeat grade levels because of poor grades, low test scores, and/or teacher judgment in the last completed school year.

*Formula*

- (1) Determine the total number of students classified at the same grade level for two consecutive years at the school, district, or state (as appropriate for the Report Card in question).
- (2) Divide the sum by the total student enrollment at the school, district, or state (as appropriate for the Report Card in question) on the 135<sup>th</sup> day.

#### PROCEDURES:

*Collected by:*

State Department of Education, Office of Research and Data Analysis

*Reported by:*

District Student Information System

*Timeframe*

135<sup>th</sup> day Data Collection

#### REPORTING & USE:

Reported on School Cards: Yes (Elementary and Middle Schools only)

Reported on District Cards: Yes

Reported on State Card: Yes

Included in Accountability Measure: No

## Percentage of Classrooms with Wireless Access

#### DEFINITION:

*General*

This indicator provides information on the percentage of classrooms that have sufficient wireless access points (all students can access the internet simultaneously). Classroom is defined as a room with a certified teacher who provides direct instruction to students.

*Formula*

Will be reported as a percentage.

#### PROCEDURES:

*Collected by:*

State Department of Education, Office of Research and Data Analysis

*Reported by:*

School Summer Survey

*Timeframe:*

May-June 30

#### REPORTING & USE:

Reported on School Cards: Yes

Reported on District Cards: Yes

Reported on State Card: Yes

Included in Accountability Measure: No

### **Percentage of 8<sup>th</sup> Graders with an Individual Graduation Plan (IGP)**

#### DEFINITION:

*General*

Percentage of 8th graders in a school who have completed an IGP.

*Formula*

Number of 8th graders in school completing an IGP divided by number of 8th graders in a school, expressed as a percentage.

#### PROCEDURES:

*Collected by:*

State Department of Education, Office of Research and Data Analysis

*Reported by:*

District Student Information System

*Timeframe:*

End of school year

#### REPORTING & USE:

Reported on School Cards: Yes (Middle Schools only)

Reported on District Cards: Yes

Reported on State Card: Yes

Included in Accountability Measure: No

### **Percentage of Students Using 1:1 Computing (One Computer for Every Student)**

#### DEFINITION:

*General*

This indicator provides information on the percentage of students with access to a device for use during the school day.

*Formula*

Percentage of students enrolled as of day 135 of school who have been assigned a device provided by the school/district or have provided their own device for use during the school day.

#### PROCEDURES:

*Collected by:*

State Department of Education, Office of Research and Data Analysis

*Reported by:*

School Summer Survey

*Timeframe:*

May-June 30

**REPORTING & USE:**

Reported on School Cards: Yes  
Reported on District Cards: Yes  
Reported on State Card: Yes  
Included in Accountability Measure: No

**Principal's or Superintendent's Years at School or District**

**DEFINITION:**

*General*

This fact reports the length of time that the principal or superintendent has been assigned to lead the school, district, or state (as appropriate for the Report Card in question).

*Formula*

Total the leader's actual length of time at the school, district, or state (as appropriate for the Report Card in question):  
Ninety days or less = 0.5 year; more than ninety days = 1.0 year

**PROCEDURES:**

*Collected by:*

State Department of Education, Office of Research and Data Analysis

*Reported by:*

School Summer Survey, District Summer Survey

*Timeframe:*

End of school year

**REPORTING & USE:**

Reported on School Cards: Yes  
Reported on District Cards: Yes  
Reported on State Card: Yes  
Included in Accountability Measure: No



## Classroom Environment

### Advanced Degrees, Percentage of Teachers with

#### DEFINITION:

##### *General*

Percentage of teachers with earned degrees above a bachelor's degree.

##### *Formula*

- (1) Determine the total number of teachers at the school, district, or state (as appropriate for the Report Card in question) with master's degrees and above.
- (2) Divide the sum by the total number of teachers in the school.

#### PROCEDURES:

##### *Collected by:*

State Department of Education, Office of Research and Data Analysis

##### *Reported by:*

School districts via Professional Certification Staff (PCS) file

##### *Timeframe:*

End of school year

#### REPORTING & USE:

Reported on School Cards: Yes

Reported on District Cards: Yes

Reported on State Card: Yes

Included in Accountability Measure: No

### Continuing Contract Status, Teachers with

#### DEFINITION:

##### *General*

This indicator reports on the percentage of teachers in the school/district with continuing contract status.

##### *Formula*

Divide the total number of full-time equivalent (FTE) teachers at the school, district, or state (as appropriate for the Report Card in question) with continuing contract status during the Ratings year by the total number of FTE teachers in the school, district, or state (as appropriate for the Report Card in question).

#### PROCEDURES:

##### *Collected by:*

State Department of Education, Office of Educator Certification

##### *Reported by:*

School districts; Educator Information System

##### *Timeframe:*

End of school year



## REPORTING & USE:

Reported on School Cards: Yes  
Reported on District Cards: Yes  
Reported on State Card: Yes  
Included in Accountability Measure: No

## Inexperienced and Out-of-Field Teachers

### DEFINITION:

#### *General*

This indicator reports on the number and percentage of teachers in the school/district who meet the definitions of “Inexperienced”, or “Out-of-field.” Definitions per South Carolina’s ESSA Plan:

#### Inexperienced Educator:

- An inexperienced teacher is defined as a teacher who has three or fewer years of teaching experience as indicated on their South Carolina license. In South Carolina, districts may keep their teachers on induction contracts for up to three years.

#### Out-of-Field Teacher:

- An out-of-field teacher is defined as a teacher who is teaching one or more courses or classes in a subject for which they do not have the appropriate certification. In South Carolina, a teacher has the appropriate certification if they have a certificate in the area or a certification permit in the area.

#### *Formula*

##### Inexperienced Educator

- (1) Determine the number of full-time equivalent (FTE) inexperienced educators teaching in math, English, science.
- (2) Determine the number of full-time equivalent (FTE) educators teaching in math, English, science.
- (3) Divide step (1) by step (2)

##### Out-of-Field Teacher

- (1) Determine the number of full-time equivalent (FTE) out of field educators teaching in math, English, or science.
- (2) Determine the number of full-time equivalent (FTE) educators teaching in math, English, or science.
- (3) Divide step (1) by step (2)

### PROCEDURES:

#### *Collected by:*

State Department of Education

#### *Reported by:*

Certification Portal System (CPS); Professional Certified Staff (PCS) file; Student Information System Table matching in-field certification codes to course codes

#### *Timeframe:*

End of school year

## REPORTING & USE:

Reported on School Cards: Yes  
Reported on District Cards: Yes  
Reported on State Card: Yes  
Included in Accountability Measure: No

*Note: While ESSA prompts states to make public definitions and measures of effective teaching, it does not require reporting of this measure.*

## Teachers Returning from the Previous School Year

### DEFINITION:

#### *General*

This indicator provides information on the percentage of classroom teachers returning to the school/district from the previous school year for a three-year period and for a one-year period.

#### *Formula*

- (1) Determine total number of teachers assigned to the school, district, or state (as appropriate for the Report Card in question) in year previous to Ratings performance year.
- (2) Determine number of teachers who returned to the same school, district, or state (as appropriate for the Report Card in question) in the Ratings year.
- (3) Divide the result from step (2) by the result from step (1). This will be the rate for the one-year period.
- (4) Average the result yielded in step (3) for the preceding three-year period.

### PROCEDURES:

#### *Collected by:*

State Department of Education, Office of Research and Data Analysis

#### *Reported by:*

Professional Certified Staff (PCS) file

#### *Timeframe:*

End of school year

### REPORTING & USE:

Reported on School Cards: Yes

Reported on District Cards: Yes

Reported on State Card: Yes

Included in Accountability Measure: No

## Teacher Vacancies Unfilled for More Than Nine Weeks

### DEFINITION:

#### *General*

This indicator reports the percentage of teaching positions that remain unfilled for more than nine weeks.

#### *Formula*

- (1) Determine the number of classroom teacher positions, excluding media specialists and school counselors that remained unfilled by certified teachers under contract for more than nine weeks.
- (2) Divide the total by the number of classroom teacher positions, excluding media specialists and school counselors, in the district.

### PROCEDURES:

#### *Collected by:*

State Department of Education, Office of Research and Data Analysis

#### *Reported by:*

School Summer Survey

#### *Timeframe:*

End of school year

## REPORTING & USE:

Reported on School Cards: Yes

Reported on District Cards: Yes

Reported on State Card: Yes

Included in Accountability Measure: No



## Student Safety

### Discipline Information

#### DEFINITION:

##### *General*

The unduplicated number of the student population involved in incidents occurring on school grounds, on school transportation, or at school-sponsored events, disaggregated by incident type.

1. In-School suspensions
2. Out-of-school suspensions
3. Expulsions
4. School-related arrests
5. Referrals to law enforcement
6. Incidents of bullying and harassment
7. Incidents of violence, which include:
  - a. Incidents involving a firearm
  - b. Homicides
  - c. Rape or attempted rape
  - d. Sexual assaults (not rape)
  - e. Robbery without a weapon
  - f. Physical attack with a weapon
  - g. Physical attack without a weapon
  - h. Threats of physical attack with weapon
  - i. Threats of physical attack without a weapon
  - j. Incidents of possession of a firearm or explosive

*Note: Incidents (number) will be disaggregated and reported out by incident type on the Report Card.*

#### PROCEDURES:

##### *Collected by:*

SC Department of Education, Office of Research and Data Analysis

##### *Reported by:*

District Student Information System, Incident Management System (IMS)

##### *Timeframe:*

Reported data will include data inputted into the Incident Management System (IMS) for the current school year. Data from the Civil Rights Data collection will be reported via a web link to comply with a directive from the Office of Civil Rights.

#### REPORTING & USE:

Reported on School Cards: Yes  
Reported on District Cards: Yes  
Reported on State Card: Yes  
Included in Accountability Measure: No

## Results of Teacher and Parent Survey Items Dealing with School Safety

### DEFINITION:

Will report out number of responses to each question and percentage of responses that answered accordingly:

#### Parent Survey

- Percent of parents who indicated on the parent survey they agreed or strongly agreed with the statement "My child feels safe at school."
- Percent of parents who indicated on the parent survey they agreed or strongly agreed with the statement "My child's teachers and school staff prevent or stop bullying at school."

#### Teacher Survey

- Percent of teachers who indicated on the teacher survey they agreed or strongly agreed with the statement "I feel safe at my school before and after hours."
- Percent of teachers who indicated on the teacher survey they agreed or strongly agreed with the statement "The rules for behavior are enforced at my school."

### PROCEDURES:

#### *Collected by:*

SC Department of Education, Office of Research and Data Analysis

#### *Reported by:*

Teacher and Parent Opinion Surveys. Minimum *n* size of 10.

#### *Timeframe:*

End of school year

### REPORTING & USE:

Reported on School Cards: Yes

Reported on District Cards: Yes

Reported on State Card: Yes

Included in Accountability Measure: No



## Financial Information

### Average Teacher Salary

#### DEFINITION:

##### *General*

This indicator reports the average salary of teachers at the school, district, or state (as appropriate for the Report Card in question). On School and District Cards, this average is compared to the state average teacher salary.

##### *Formula*

- (1) Add the salaries of the total full-time teachers assigned to the school, district, or state (as appropriate for the Report Card in question; based on 190 days).
- (2) Divide the sum by the total full-time teachers assigned to the school, district, or state (as appropriate for the Report Card in question; based on 190 days).

#### PROCEDURES:

##### *Collected by:*

State Department of Education, Office of Finance

##### *Reported by:*

School districts – Professional Certified Staff (PCS) file

##### *Timeframe:*

End-of-year school year data collection

#### REPORTING & USE:

Reported on School Cards: Yes

Reported on District Cards: Yes

Reported on State Card: Yes

Included in Accountability Measure: No

### Classroom Instruction, Percent Expended on

#### DEFINITION:

##### *General*

This measure reports the percentage of school district funding expended on classroom instruction.

##### *Formula*

Determine the percentage of district total operating expenses listed in the In\$ite™ database expended for the category “Instruction.”

*Note: Footnote on Report Card with statement “most recent audited data.”*

#### PROCEDURES

##### *Collected by:*

State Department of Education, Office of Finance

##### *Reported by:*

School district financial officers

*Timeframe:*

135-day data collection

**REPORTING & USE:**

Reported on School Cards: Yes  
Reported on District Cards: Yes  
Reported on State Card: Yes  
Included in Accountability Measure: No

## **Dollars Spent Per Pupil**

**DEFINITION:**

*General*

This indicator reports the federal, state, and district funds spent for the education of each student during the prior school year.

*Formula*

- (1) Determine annual operating expenses for all school activities. Include In\$ite™ categories for instruction, instructional support, operations, and leadership. Exclude expenses for capital outlay and debt service categories.
- (2) Divide the sum by the average daily membership (ADM) of the school, district, or state (as appropriate for the Report Card in question).

*Note: Footnote on Report Card with statement “most recent audited data.”*

**PROCEDURES:**

*Collected by:*

State Department of Education, Office of Finance

*Reported by:*

School district financial officers

*Timeframe:*

135<sup>th</sup> day data collection

**REPORTING & USE:**

Reported on School Cards: Yes  
Reported on District Cards: Yes  
Reported on State Card: Yes  
Included in Accountability Measure: No

## **Percentage of Expenditures Spent on Teacher Salaries**

**DEFINITION:**

*General*

This measure provides information on the percentage of per student expenditures spent on teacher, instructional assistant, and substitute salaries for the prior school year.

*Formula*

- (1) Add teacher salaries, instructional assistant salaries, and substitute teacher pay for the year of the Report Card data at the school, district, or state (as appropriate for the Report Card in question).
- (2) Divide by the total dollars spent.

**PROCEDURES:**

*Collected by:*

State Department of Education, Office of Finance

*Reported by:*

School district financial officers

*Timeframe:*

135-day data collection

#### REPORTING & USE:

Reported on School Cards: Yes

Reported on District Cards: Yes

Reported on State Card: Yes

Included in Accountability Measure: No

## Salaries, Administrative

#### DEFINITION:

*General*

This measure reports the average salary of administrators in the district. The average district salary is compared to national and state average salary for these educators.

*Formula*

- (1) Determine the aggregate salaries of administrators in the district (paid on administrative schedule and with a contract length of at least 190 days.)
- (2) Divide the sum by the total number of administrators in the district.

#### PROCEDURES:

*Collected by:*

State Department of Education, Office of Finance

*Reported by:*

School districts – Professional Certified Staff (PCS) file

*Timeframe:*

End of school year

#### REPORTING & USE:

Reported on School Cards: Yes

Reported on District Cards: Yes

Reported on State Card: Yes

Included in Accountability Measure: No

## Poverty Index

#### DEFINITION:

*General*

As defined for purposes of the Education Finance Act (EFA), the percentage of students who are transient, a runaway, in foster care, homeless, or have been Medicaid-eligible or qualified for SNAP or TANF services within the last three years.

#### PROCEDURES:

*Collected by:*

South Carolina Department of Education

SC Revenue and Fiscal Affairs (RFA) Office

*Reported by:*

School Districts: District Student Information System



*Timeframe:*

180 Day Collection

**REPORTING & USE:**

Reported on School Cards: Yes

Reported on District Cards: Yes

Reported on State Card: Yes

Included in Accountability Measure: No

# GENERAL INFORMATION

## Non-Indicator Information

### Total Number of Enrolled Students

#### DEFINITION:

##### *General*

Total number of students enrolled in grades Pre-K (3- and 4-year old programs) through 12 in the school, district, or state (as appropriate for the Report Card in question) on the forty-fifth day of school.

##### *Formula*

Determine the student count for the total number of students enrolled in the school, district, or state (as appropriate for the Report Card in question) in grades Pre-K through 12 on the forty-fifth day of school at their school of enrollment.

#### PROCEDURES:

##### *Collected by:*

State Department of Education, Office of Research and Data Analysis

##### *Reported by:*

District Student Information System

##### *Timeframe:*

45<sup>th</sup> day Data Collection

#### REPORTING & USE:

Reported on School Cards: Yes

Reported on District Cards: Yes

Reported on State Card: Yes

Included in Accountability Measure: No

### Total Number of Teachers in School

#### DEFINITION:

##### *General*

Total number of teachers employed in the school, district, or state (as appropriate for the Report Card in question) on the 135th day of the reporting year.

##### *Formula*

Determine the total number of teachers employed in the school, district, or state (as appropriate for the Report Card in question) in grades Pre-K through 12 on the 135<sup>th</sup> day of school for their school of employment.

#### PROCEDURES:

##### *Collected by:*

State Department of Education, Office of Research and Data Analysis

##### *Reported by:*

PCS file

##### *Timeframe:*

135th day Data Collection

## REPORTING & USE:

Reported on School Cards: Yes  
Reported on District Cards: Yes  
Reported on State Card: Yes  
Included in Accountability Measure: No

## School / District Websites and Social Media Channels

### DEFINITION:

#### *General*

The school, district, or state (as appropriate for the Report Card in question) website address as well as Facebook or Twitter channels (as applicable).

### PROCEDURES:

#### *Collected by:*

State Department of Education, Office of Research and Data Analysis

#### *Reported by:*

School Summer Survey, District Summer Survey

## REPORTING & USE:

Reported on School Cards: Yes  
Reported on District Cards: Yes  
Reported on State Card: Yes  
Included in Accountability Measure: No

## School / District Narrative

### DEFINITION:

#### *General*

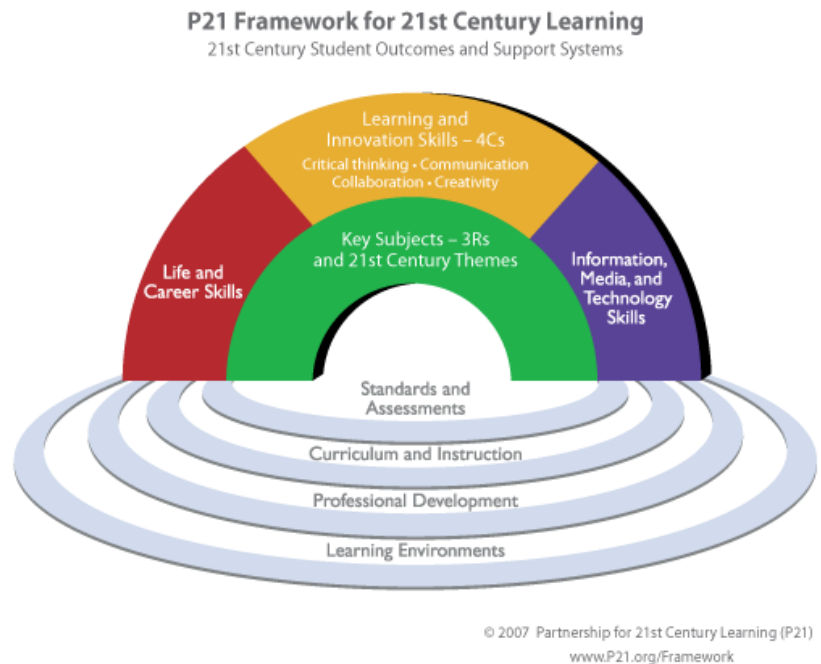
For the 2020-21 district and school Report Cards, district superintendents, school principals, and School Improvement Councils are asked to focus on the World Class Skills of the *Profile of the South Carolina Graduate* and respond to the following prompt:

Our district/school is helping all students develop the World Class Skills of the *Profile of the South Carolina Graduate* by . . .

For example, districts and schools may want to focus on the four Cs – critical thinking, communication, collaboration, and creativity. To make this even more targeted, a district or school may choose at least two of the four Cs and explain briefly what your district/school has done in the current school year to increase student readiness and provide data to show whether your efforts are having an impact.

The following framework developed by Partnerships for 21<sup>st</sup> Century Skills may be of assistance:

<http://www.battelleforkids.org/networks/p21>



## PROCEDURES:

### *Collected by:*

State Department of Education, Office of Research and Data Analysis

### *Reported by:*

School Summer Survey, District Summer Survey

## REPORTING & USE:

Reported on School Cards: Yes

Reported on District Cards: Yes

Reported on State Card: Yes

Included in Accountability Measure: No

# Subgroup Coding for Accountability

## Migratory

### DEFINITION:

#### *General*

An SEA-approved Certificate of Eligibility (COE) that is completed by a SEA-approved Title I, Part C recruiter is required to determine eligibility for migratory status while resident and enrolled in a school district.

The term “migratory child” means a child or youth who made a qualifying move in the preceding 36 months. A “qualifying move” is defined as a move:

- that occurred in the preceding 36 months
- as a migratory agricultural worker or fisher, or
- to join a parent or spouse who is a migratory agricultural worker or fisher, and
- due to economic necessity, and
- from one residence to another residence, and
- from one school district to another school district, except—
  - in the case of a State that is comprised of a single school district, wherein a qualifying move is from one administrative area to another within such district; or
  - in the case of a school district of more than 15,000 square miles, wherein a qualifying move is a distance of 20 miles or more to a temporary residence

Examples of Agricultural and Fishing work:

- any activity directly related to the production or processing of crops, dairy products, poultry or livestock for initial commercial sale or personal subsistence;
- any activity directly related to the cultivation or harvesting of trees; or
- any activity directly related to fish farms.

Current lists of eligible migratory students for your district are provided by the SCDE Title I, Part C MEP Coordinator and Diversity, Inclusion, & Access (DIA) Team Lead, Zach Taylor: 803-734-8219, [ztaylor@ed.sc.gov](mailto:ztaylor@ed.sc.gov)

#### *Formula*

MigrantIndicator equals '1'

### PROCEDURES:

#### *Collected by:*

Office of Research and Data Analysis, Office of Federal & State Accountability

#### *Reported by:*

Student Information System

#### *Timeframe:*

First Day of Testing and 180<sup>th</sup> day Data Collection

### REPORTING & USE:

Reported on School Cards: Yes

Reported on District Cards: Yes

Included in Accountability Measure: No

## Homeless

### DEFINITION:

#### *General*

Homeless indicator based on information collected within Primary Night Time Residence (Night\_Residence) field. Select the primary nighttime residence for the student from permitted values below:

- S – Shelters, transitional housing
- D – Doubled-up means sharing the housing of other persons due to economic hardship, loss of housing or other reasons (such as domestic violence).
- U – Unsheltered includes cars, parks, camp grounds, temporary trailers including FEMA trailers, abandoned buildings, or substandard housing
- H – Hotels/motels

#### *Formula*

HomelessIndicator equals 'Y'

### PROCEDURES:

#### *Collected by:*

Office of Research and Data Analysis, Office of Federal & State Accountability

#### *Reported by:*

Student Information System

#### *Timeframe:*

First Day of Testing and 180<sup>th</sup> day Data Collection

### REPORTING & USE:

Reported on School Cards: Yes

Reported on District Cards: Yes

Included in Accountability Measure: No

## Military Connected

### DEFINITION:

#### *General*

Parent Military Status (ParentsMilitaryStatus) is coded based on the following list:

- 03 – A Parent or Guardian is serving in the National Guard and is currently deployed.
- 04 – A Parent or Guardian is serving in the Reserves and is currently deployed.
- 05 – A Parent or Guardian is serving in the military on active duty but is not deployed.
- 06 – A Parent or Guardian is serving in the military on active duty and is currently deployed.
- 07 – The student's Parent or Guardian died while on active duty within the last year.
- 08 – The student's Parent or Guardian was wounded while on active duty within the last year.

#### *Formula*

ParentMilitaryStatus equals any of the following ('03', '04', '05', '06', '07', '08')

### PROCEDURES:

#### *Collected by:*

Office of Research and Data Analysis, Office of Federal & State Accountability

#### *Reported by:*

Student Information System

#### *Timeframe:*

First Day of Testing and 180<sup>th</sup> day Data Collection

## REPORTING & USE:

Reported on School Cards: Yes  
Reported on District Cards: Yes  
Included in Accountability Measure: No

## Foster

### DEFINITION:

#### *General*

Foster Home status is based on whether or not a student resided in a foster home for the current school year:

- Y – Yes

#### *Formula*

Foster\_Home equals 'Y'

### PROCEDURES:

#### *Collected by:*

Office of Research and Data Analysis, Office of Federal & State Accountability

#### *Reported by:*

Student Information System

#### *Timeframe:*

First Day of Testing and 180<sup>th</sup> day Data Collection

## REPORTING & USE:

Reported on School Cards: Yes  
Reported on District Cards: Yes  
Included in Accountability Measure: No

## Students with a Disability (SWD)

### DEFINITION:

#### *General*

The Instructional Setting (SC\_InstrSetting) field indicates that the student is currently receiving special education services and has an Individualized Education Program (IEP) in effect. This field will be used by the Office of Exceptional Children, Research and Data Analysis, and Finance for reporting purposes.

- SE - Special Ed - Full Yr
- SR - Currently SE, was Reg Ed
- SP - Currently SE, was 504 Plan

#### *Formula*

Instructional Setting equals any of the following codes ('SE', 'SR', 'SP')

### PROCEDURES:

#### *Collected by:*

Office of Research and Data Analysis, Office of Federal & State Accountability

#### *Reported by:*

Student Information System

#### *Timeframe:*

First Day of Testing and 180<sup>th</sup> day Data Collection

## REPORTING & USE:

Reported on School Cards: Yes  
 Reported on District Cards: Yes  
 Included in Accountability Measure: No

## English Learners

### DEFINITION:

#### General

South Carolina defines English Learners (EL) as a student who has a primary language other than English and is not proficient in listening, speaking, reading, writing, or comprehension in the English speaking classroom as determined by a language assessment instrument.

#### Formula

English Learners (may be named English, EngProf, ESL) are defined as students who are coded with values 1 through 6 as well as students who exited but are monitored, M1-M4 (see table below), and are **not** classified with any of the following codes: ('6P', '7', '7P', '8', '8.0', '8FOREX', '8FRMEL', '8NVREL', '9', '9.0', or blank)

English Proficiency Code	Criteria	Dropdown List Description	ELP Assessment Required
1.0-1.9	Student scored <b>Entering</b> on ACCESS for ELLs, WIDA Screener or WIDA MODEL and is receiving ESOL services from mainstream or ESOL teacher(s). or Combined Listening and Speaking score of $\leq 26$ on K W- APT 1st semester. or Combined Listening & Speaking score of $\leq 26$ , or a reading raw score of $\leq 13$ , or a writing score of $\leq 16$ on K W-APT 2nd semester – 1st semester 1st grade.	Entering	Y
2.0-2.9	Student scored <b>Emerging</b> on ACCESS for ELLs, WIDA Screener or WIDA MODEL and is receiving ESOL services from mainstream or ESOL teacher(s).	Emerging	Y
3.0-3.9	Student scored <b>Developing</b> on ACCESS for ELLs, WIDA Screener or WIDA MODEL and is receiving ESOL services from mainstream or ESOL teacher.	Developing	Y
4.0-4.9	Student scored <b>Expanding</b> on ACCESS for ELLs, WIDA Screener or WIDA MODEL and is receiving ESOL services from mainstream or ESOL teacher(s). Student may not have an overall score of $\geq 4.4$ or does not have $\geq 4.0$ in all domains.	Expanding	Y
5.0-5.9	Student scored <b>Bridging</b> on ACCESS for ELLs, WIDA Screener or WIDA MODEL and is receiving ESOL services from mainstream or ESOL teacher(s). While the overall score is $\geq 4.4$ , the student does not have $\geq 4.0$ in all domains.	Bridging	Y
6.0	Student scored <b>Reaching</b> on ACCESS for ELLs, WIDA Screener or WIDA MODEL and is receiving ESOL services from mainstream or ESOL teacher(s). While the overall score is $\geq 6.0$ , the student does not have $\geq 4.0$ in all domains.	Reaching	Y
M1	This is the 1st year of monitoring. <ul style="list-style-type: none"> <li>Scored <math>\geq 4.4</math> overall composite score with a <math>\geq 4.0</math> in all domains on ACCESS ELLs. or</li> <li>Combined score of <math>\geq 27</math> on Listening and Speaking test on K W-APT 1st semester or <math>\geq 4.4</math> or higher on WIDA MODEL. or</li> <li>P1 or higher on ALT – ACCESS.</li> </ul>	1st Year Monitor	N
M2	2nd year monitoring	2nd Year Monitor	N
M3	3rd year monitoring	3rd Year Monitor	N
M4	4th year monitoring	4th Year Monitor	N



## PROCEDURES:

*Collected by:*

Office of Research and Data Analysis, Office of Federal & State Accountability

*Reported by:*

Student Information System

*Timeframe:*

First Day of Testing and 180<sup>th</sup> day Data Collection

## REPORTING & USE:

Reported on School Cards: Yes

Reported on District Cards: Yes

Included in Accountability Measure: No

## Longitudinal Accountability

For longitudinal accountability (i.e. Gradrate, High School Achievement/Preparing for Success) see following logic to fill in information for missing subgroup values.

SUBGROUP	CODING																																				
<b>Students with a Disability (SWD)</b>	<p>If ever SWD in past four years, mark as SWD</p> <p>Because of changes in coding over the years, the following accommodation has been used to include all students with disabilities:</p> <ul style="list-style-type: none"><li>• If Instructional Setting equals any of the following (SR, SP or SE) then Handi_IS = "Y"</li><li>• If EFA Primary equals any value in the table below, then Handi_EFA = "Y" or</li><li>• If EFA Primary equals "HO" AND EFA Secondary01 equals any value in the table below, then Handi_EFA = "Y"</li><li>• If Handi_EFA="Y" and/or Handi_IS = "Y" then Students With Disabilities = "Y"</li></ul> <table><tr><th colspan="2">EFA Codes</th></tr><tr><th>EFA Code</th><th>EFA Code Description</th></tr><tr><td>*DD</td><td>Developmentally Disabled</td></tr><tr><td>*OHI</td><td>Other Health Impaired</td></tr><tr><td>*PMD</td><td>Profoundly Mentally Handicapped</td></tr><tr><td>*TBI</td><td>Traumatic Brain Injury</td></tr><tr><td>AU</td><td>Autism</td></tr><tr><td>EH</td><td>Emotionally Handicapped</td></tr><tr><td>EM</td><td>Educationally Mentally Handicapped</td></tr><tr><td>HH</td><td>Hearing Handicapped</td></tr><tr><td>LD</td><td>Learning Disability</td></tr><tr><td>OH</td><td>Orthopedic Handicapped</td></tr><tr><td>OHI</td><td>Other Health Impaired</td></tr><tr><td>PMD</td><td>Profoundly Mentally Handicapped</td></tr><tr><td>SP</td><td>Speech Handicapped</td></tr><tr><td>TBI</td><td>Traumatic Brain Injury</td></tr><tr><td>TM</td><td>Trainable Mentally Handicapped</td></tr><tr><td>VH</td><td>Visually Handicapped</td></tr></table>	EFA Codes		EFA Code	EFA Code Description	*DD	Developmentally Disabled	*OHI	Other Health Impaired	*PMD	Profoundly Mentally Handicapped	*TBI	Traumatic Brain Injury	AU	Autism	EH	Emotionally Handicapped	EM	Educationally Mentally Handicapped	HH	Hearing Handicapped	LD	Learning Disability	OH	Orthopedic Handicapped	OHI	Other Health Impaired	PMD	Profoundly Mentally Handicapped	SP	Speech Handicapped	TBI	Traumatic Brain Injury	TM	Trainable Mentally Handicapped	VH	Visually Handicapped
EFA Codes																																					
EFA Code	EFA Code Description																																				
*DD	Developmentally Disabled																																				
*OHI	Other Health Impaired																																				
*PMD	Profoundly Mentally Handicapped																																				
*TBI	Traumatic Brain Injury																																				
AU	Autism																																				
EH	Emotionally Handicapped																																				
EM	Educationally Mentally Handicapped																																				
HH	Hearing Handicapped																																				
LD	Learning Disability																																				
OH	Orthopedic Handicapped																																				
OHI	Other Health Impaired																																				
PMD	Profoundly Mentally Handicapped																																				
SP	Speech Handicapped																																				
TBI	Traumatic Brain Injury																																				
TM	Trainable Mentally Handicapped																																				
VH	Visually Handicapped																																				
<b>Migrant</b>	If ever Migrant in past four years, mark as Migrant																																				
<b>Homeless</b>	If ever Homeless in past four years, mark as Homeless																																				

<b>Military Connected</b>	If ever Military Connected in past four years, mark as Military Connected
<b>Foster</b>	If ever Foster in past four years, mark as Foster
<b>English Learners</b>	<p>Because of monitoring status, the coding for longitudinal accountability will be tracked as follows:</p> <ul style="list-style-type: none"> <li>• If the English Proficiency Code* does NOT equal ('6P', '7', '7P', '8', '8.0', '8FOREX', '8FRMEL', '8NVREL', '9', '9.0', or blank) then English Learner Subgroup='YES';</li> <li>• ALSO if English Proficiency equals any monitoring status code ('P1', 'P2', 'P3', 'P4') during prior years then code as follows:</li> <li>• If one year prior ESL equals ('P4') then English Learner Subgroup='NO';</li> <li>• If two years prior ESL equals ('P3','P4') then English Learner Subgroup ='NO';</li> <li>• If three years prior ESL equals ('P2','P3','P4') then English Learner Subgroup ='NO';</li> <li>• If four years prior ESL equals ('P1','P2','P3','P4') then English Learner Subgroup ='NO';</li> </ul> <p>*variable may be named English, EngProf, ESL or some variation;</p>